

# 2022

Service · Health · Future

# BIOBASE

BIOBASE CHINA



## SOLUTION FOR CORONAVIRUS PREVENTION AND CONTROL

**По вопросам продаж и поддержки обращайтесь:**

Архангельск (8182)63-90-72  
Астана +7(7172)727-132  
Астрахань (8512)99-46-04  
Барнаул (3852)73-04-60  
Белгород (4722)40-23-64  
Брянск (4832)59-03-52  
Владивосток (423)249-28-31  
Волгоград (844)278-03-48  
Вологда (8172)26-41-59  
Воронеж (473)204-51-73  
Екатеринбург (343)384-55-89  
Иваново (4932)77-34-06  
Ижевск (3412)26-03-58  
Иркутск (395) 279-98-46  
Киргизия (996)312-96-26-47

Казань (843)206-01-48  
Калининград (4012)72-03-81  
Калуга (4842)92-23-67  
Кемерово (3842)65-04-62  
Киров (8332)68-02-04  
Краснодар (861)203-40-90  
Красноярск (391)204-63-61  
Курск (4712)77-13-04  
Липецк (4742)52-20-81  
Магнитогорск (3519)55-03-13  
Москва (495)268-04-70  
Мурманск (8152)59-64-93  
Набережные Челны (8552)20-53-41  
Нижний Новгород (831)429-08-12  
Казахстан (772)734-952-31

Новокузнецк (3843)20-46-81  
Новосибирск (383)227-86-73  
Омск (3812)21-46-40  
Орел (4862)44-53-42  
Оренбург (3532)37-68-04  
Пенза (8412)22-31-16  
Пермь (342)205-81-47  
Ростов-на-Дону (863)308-18-15  
Рязань (4912)46-61-64  
Самара (846)206-03-16  
Санкт-Петербург (812)309-46-40  
Саратов (845)249-38-78  
Севастополь (8692)22-31-93  
Симферополь (3652)67-13-56  
Таджикистан (992)427-82-92-69

Смоленск (4812)29-41-54  
Сочи (862)225-72-31  
Ставрополь (8652)20-65-13  
Сургут (3462)77-98-35  
Тверь (4822)63-31-35  
Томск (3822)98-41-53  
Тула (4872)74-02-29  
Тюмень (3452)66-21-18  
Ульяновск (8422)24-23-59  
Уфа (347)229-48-12  
Хабаровск (4212)92-98-04  
Челябинск (351)202-03-61  
Череповец (8202)49-02-64  
Ярославль (4852)69-52-93

Эл. почта [bba@nt-rt.ru](mailto:bba@nt-rt.ru) || Сайт: <https://biobase.nt-rt.ru/>



# CONTENT

## 01 Quick Inspection

- \* SARS-CoV-2 Antigen Test Kit (Colloidal Gold)
- \* 2019-nCoV IgM/IgG Antibody Test Kit (Colloidal Gold)
- \* SARS-CoV-2 Neutralizing Antibody Test Kit (Colloidal Gold)

## 02 PCR Laboratory Instruments

- \* Automated Sample Processing System
- \* Nucleic Acid Extractor
- \* Multi-type Sample DNA/RNA Extraction-Purification Kit
- \* Fluorescent Quantitative Detection System
- \* Novel Coronavirus (2019-nCoV) Nucleic Acid Detection Kit (Fluorescence PCR)

## 03 Sterilization and Protection Products

- \* Mask
- \* Biological Isolation Chamber
- \* Nucleic Acid Collection Safety Station
- \* Atomizing Disinfection Robot
- \* Air Purifier

## 04 Mini PCR Workstation

## 05 Mobile PCR Laboratory





## **Quick Inspection**

### **SARS-CoV-2 Antigen Test Kit (Colloidal Gold)**

—— Convenient Operation and Rapid Screening

**BIOBASE PROTECTS YOUR HEALTH**

We have two packages for your choices.



Individual Package (20T/box)



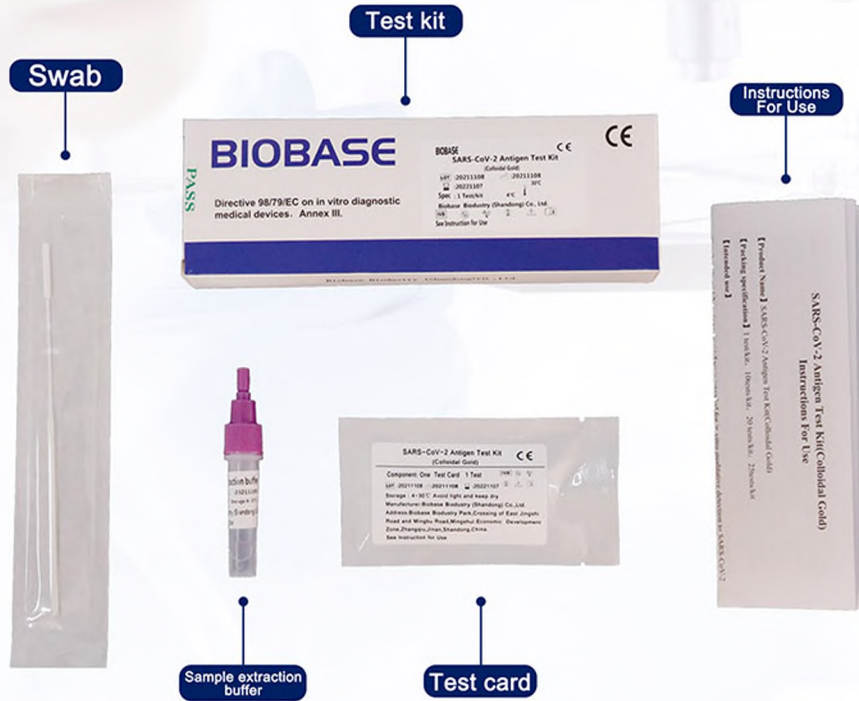
Normal Package (20T/box)

CE and BfArM Certification.

- \* Rapid detection :15-20 minutes out of the results.
- \* Sensitivity:98.15%.
- \* Specificity:98.44%.
- \* Easy to use, can be used by non-professionals.

**A Individual Package**

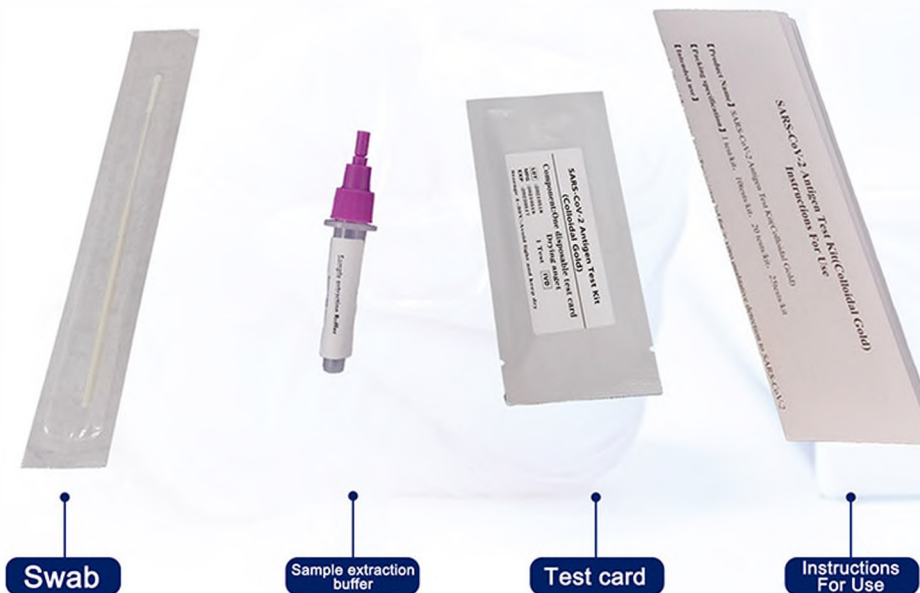
Package for 1 Test:



Packing Quantity	Package Size	Gross Weight
1 boxes/carton	300*250*200mm	1kg
12 boxes/carton	650*440*430mm	11kg
16 boxes/carton	840*560*260mm	14kg

**B Normal Package**

What In the Box?



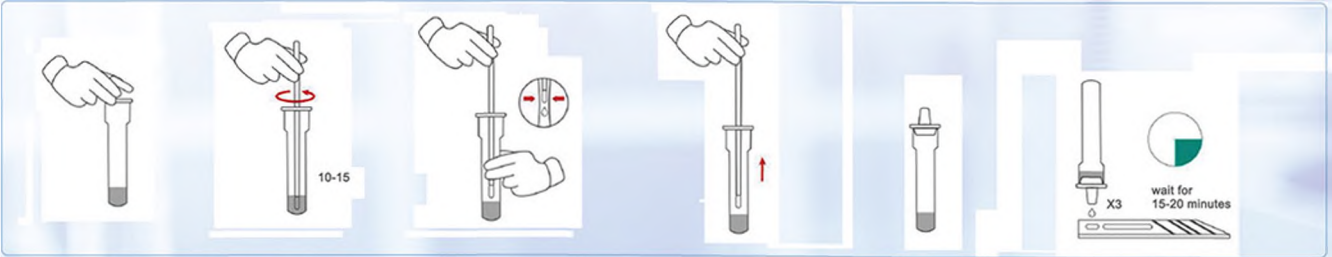
Packing Quantity	Package Size	Gross Weight
1 boxes/carton	300*200*150mm	0.5kg
22 boxes/carton	460*350*350mm	7.5kg
50 boxes/carton	650*440*430mm	15kg

## HOW TO USE

### Sample collection:



### Sample testing:



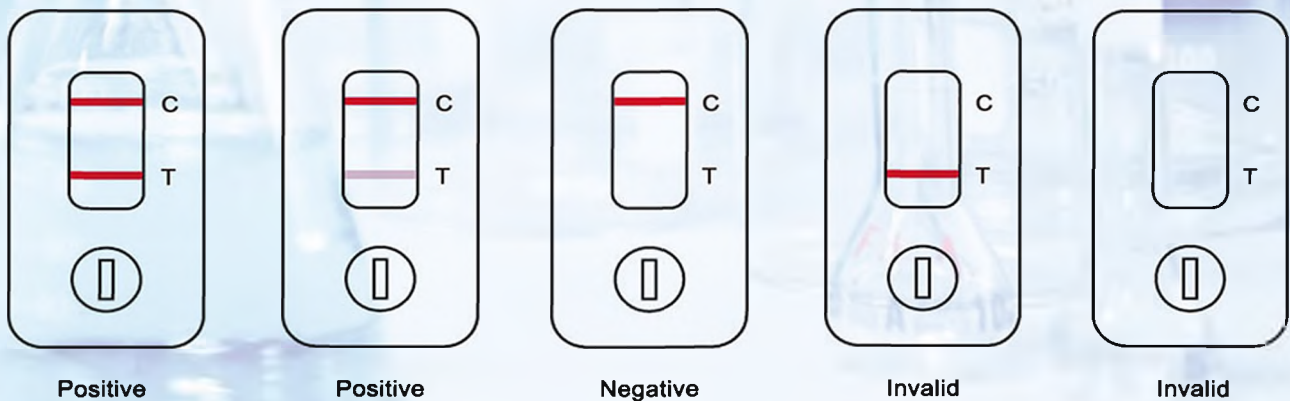
### The Results of Judgment:

Positive: T-line and C-line present within 15-20 minutes after sample addition.

Negative: only C-line, no T-line, occurs within 15-20 minutes after dropping the sample.

Invalid: As long as there is no line C, this test card is invalid. Please use another test card to retest.

*Do not check the results after 20minutes.*



Positive

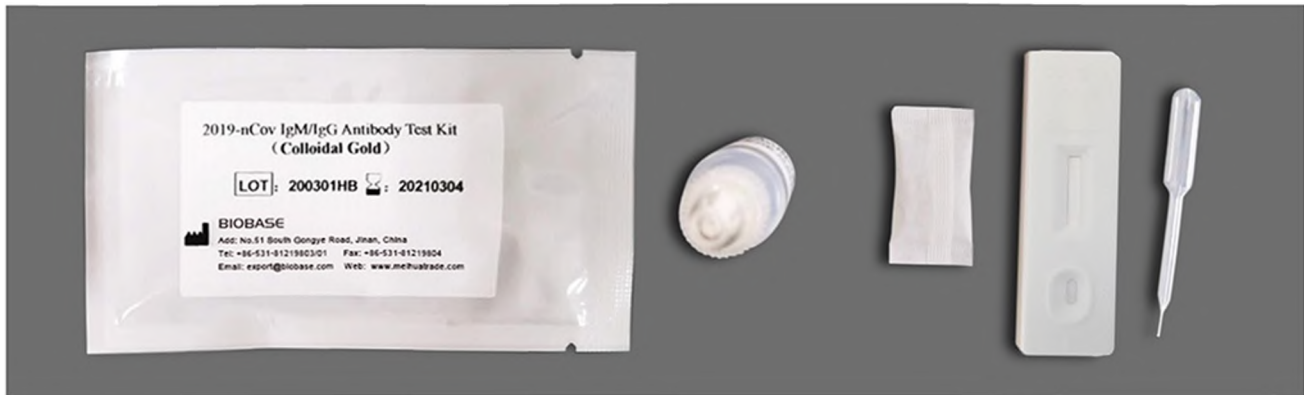
Positive

Negative

Invalid

Invalid

## 2019-nCoV IgM/IgG Antibody Test Kit(Colloidal Gold)



### Introduction

When the human body is infected with the 2019-nCoV, the first antibody produced is the specific IgM antibody, which is generally produced after 3-7days of infection, and is replaced by a large number of specific IgG antibodies produced about two weeks later. Therefore, IgM and IgG of the 2019-nCoV specific antibodies can be used as an auxiliary means for the diagnosis of suspected patients.

### Product characteristics



The risk of medical staff is small, reducing the probability of droplet infection.



Dosage is less, only 1 drop of serum or plasma sample is needed.



It's fast and takes only 10 minutes to produces results.



Testing IgM and IgG at the same time to reduce the testing time.



No special testing environment and personnel training is required.



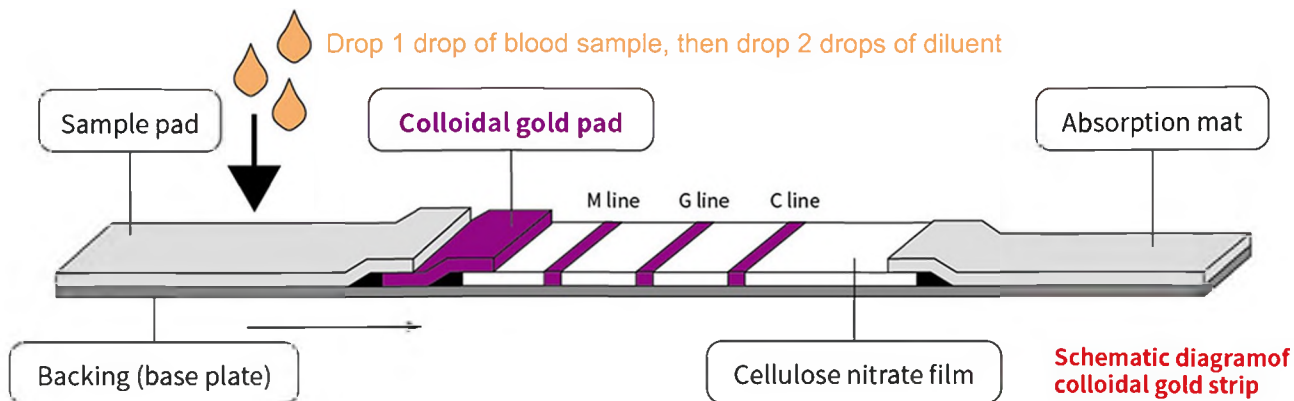
Convenient, fast, suitable for mass screening.



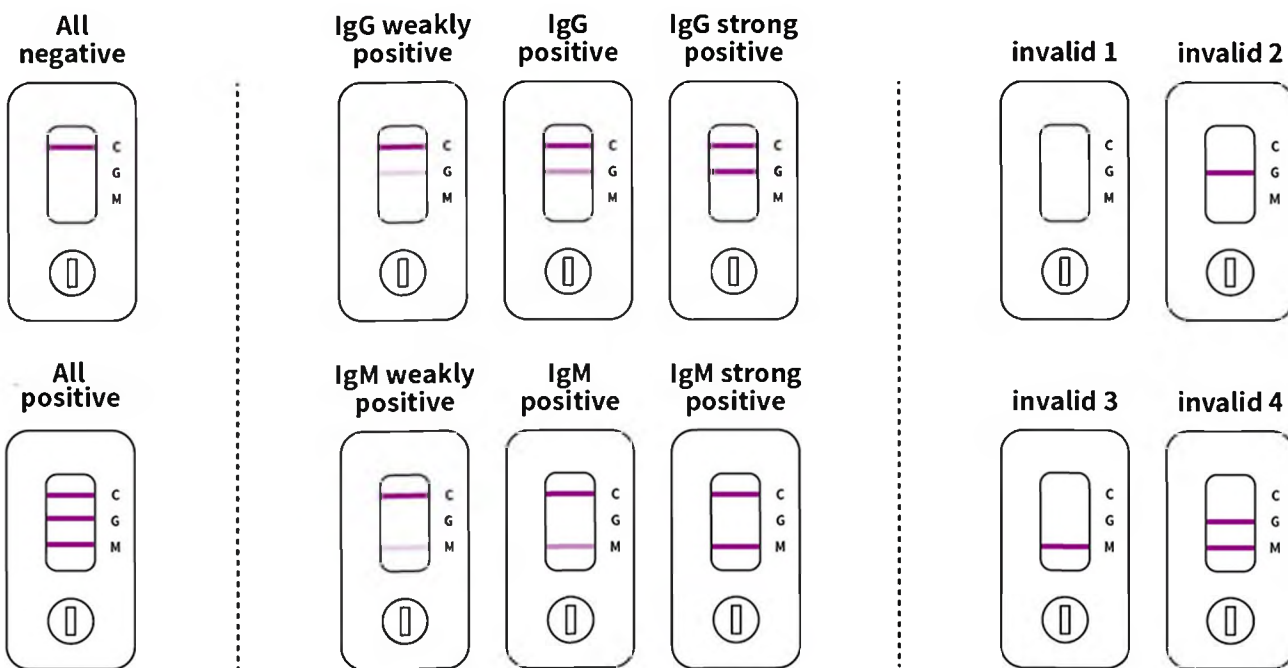
Compared with nucleic acid test swabs and pharyngeal swabs, it is less affected by samples and has high accuracy.



Adjuncts to confirm suspected cases



The results of judgment



Technical Parameters

Product Name	2019-nCoV IgM/IgG Antibody Tset Kit(Colloidal Gold)
Specimen	WB/S/P
Format	Panel
Kit Size	20T/Box, 25 Boxes/Carton
Package Size	450*340*350mm
Gross Weight	5.5kg

## SARS-CoV-2 Neutralizing Antibody Test Kit (Colloidal Gold)



### Introduction:

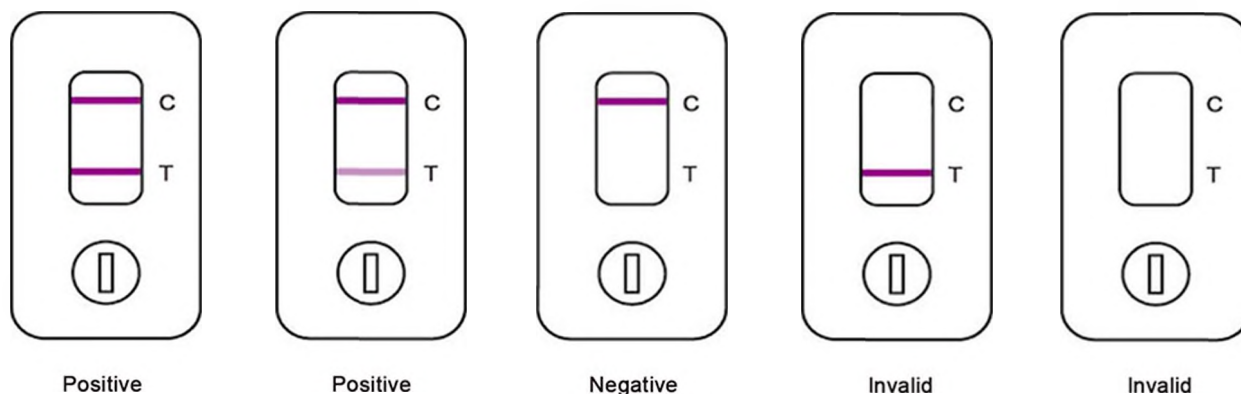
The SARS-CoV-2 Neutralizing Antibody Rapid Test Kit (Colloidal Gold) is a rapid chromatographic immunoassay for the qualitative detection of neutralizing antibodies to SARS-Cov-2 in human whole blood, serum, or plasma as an aid in the diagnosis of the presence of neutralizing antibodies to SARS-CoV-2.

### Application:

Neutralizing antibody test Neutralizing antibody test is generally used for the sample test of people who have recovered from new coronavirus infection and those who have been immunized with new coronavirus vaccine; it can also be used for immune assessment of people who have been injected with new coronavirus vaccine to assess whether the vaccine is effective in producing new coronavirus The immune effect of the virus, whether it has a defensive ability against the new coronavirus; it can also be used as a tool for the new coronavirus vaccine developers to evaluate the immune ability of the vaccine.

**Steps:**

- \* Take out the test card and place it on a horizontal table.
- \* Mark the sample number on the test card.
- \* Serum/plasma sample detection: Use a disposable pipette to draw the serum/plasma sample, add a drop (about 20  $\mu$ l) of the serum/plasma sample to the sample hole of the test card, and immediately add 2 drops of sample diluent to the sample hole .
- \* Whole blood sample detection: Use a disposable pipette to draw a whole blood sample, add two drops (about 40  $\mu$ l) of whole blood sample to the sample hole of the test card, and immediately add 2 drops of sample diluent to the sample hole.
- \* Observe the results after 15 minutes, and the results are invalid after 20 minutes.



**The Results of Judgment: :**

**Positive:** T-line and C-line present within 15-20 minutes after sample addition.

**Negative:** only C-line, no T-line, occurs within 15-20 minutes after dropping the sample.

**Invalid:** As long as there is no line C, this test card is invalid. Please use another test card to retest.

**Technical Parameters:**

Product Name	Sample Requirements	Contents	Detection Time	Kit Size	Package Size	Gross Weight
SARS-CoV-2 Neutralizing Antibody Rapid Test Kit (Colloidal Gold)	The applicable sample types for this test card are serum/plasma /whole blood.	Test card, disposable pipette, sample diluent	15-20min	20T/Box, 60 Boxes /Carton	650*440*430mm	12.5kg

# PCR Laboratory Instruments

## Automated Sample Processing System

### BK-PR48

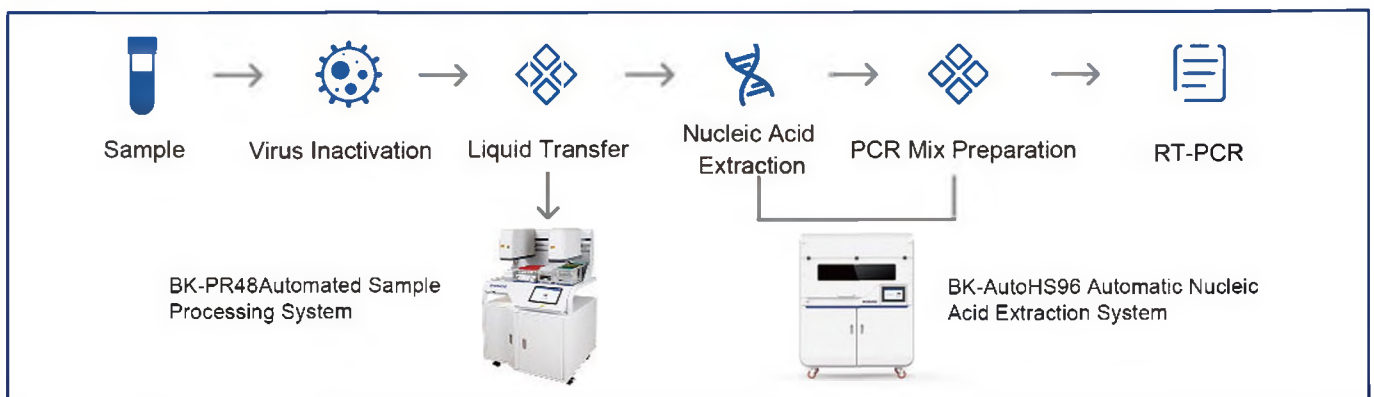


**BK-PR32**



**BK-PR48**

#### Work Process:



#### Introduction:

The Automated Sample Processing System is equipped with an independent HEPA filter system, and the Automated Sample Processing System can be used with a biological safety cabinet.

It can complete lid opening/closing, dispensing, proteinase K internal control addition, which helps laboratories quickly improve their large-scale nucleic acid detection capabilities.

#### Application:

Sample processing for clinical diagnosis, epidemic surveillance, food safety, forensic identification, scientific research, etc., especially for samples of SARS-CoV-2 or other virulent infectious diseases.

## Features:

**Safety:** Automated Sample Processing System is equipped with high-efficiency filter and built-in UV lamp, and it can be used with a biological safety cabinet, to effectively prevent aerosol pollution.

**Efficient:** Cooperative processing with dual robotic arms

**Convenient:** Visual interface operation, easy to operate

**Compatibility:** Compatible with a variety of pipette tips, deep well plates, sampling tubes.

(including blood collection tubes) specifications

**Smart:** One-key operation, smart dispensation

## Parameters:

Model	BK-PR32	BK-PR48
Throughput	1-32	1-48
Processing Time	32 samples/10min	48 samples/16min
Sample Type	Plasma, serum, whole blood, swab solution and other samples	
Sample Rack	1Pcs, 3*12 with locking device (compatible with a variety of sampling tubes)	1Pcs, 6*8 with locking device (compatible with a variety of sampling tubes)
Robot Arm	1 pcs (Dispensation arm )	2 pcs (Dispensation arm and Screw cap arm)
Plate Position	2 pcs (Compatible with I-shaped and square boards)	3 pcs (Compatible with multi-specification deep-well plates)
Tip Position	3 pcs (Including tip waste box position)	
Reagent Rack	1 pcs (4*2ml centrifuge tube+4*2ml freezing tube+4*5ml freezing tube)	
Protective Function	Can be used in a biological safety cabinet External droplet catch tray design With air-tight and anti-drip design	
Liquid Detection	Pneumatic liquid level detection principle, intelligent detection of blocked needle	
Pipetting Volume	5-1000ul (1000/50ul Tip)	
Pipetting Accuracy	10ul, CV≤1.5%, Accuracy≤6.0%, 50ul Tip 50ul, CV≤1.0%, Accuracy≤2.0%, 100ul Tip 100ul, CV≤0.5%, Accuracy≤2.0%, 1000ul Tip	
Power Supply	220V,50/60HZ;110V,60HZ	
External Size (W*D*H)	540*637*1113mm	827*794*1223mm
Net Weight	56kg	100kg
Package Size (W*D*H)	670*810*1314mm	Main instrument: 925*925*817mm; Base cabinet:1030*995*1045
Gross Weight	76kg	Main instrument: 115kg; Base cabinet:105kg

# Nucleic Acid Extractor BNP32/BNP48

**BNP32****BNP48**

## Operation Process:



## Features:

- ① 7-Inch touch screen, easy to use, fast response
- ② User-defined cracking and elution temperature
- ③ UV disinfection function, time range 1min-24hour
- ④ Automatic control system, no need connect to computer
- ⑤ Free programming to meet the needs of different reagent
- ⑥ Open system, fully automatic, stable results and good repeatability
- ⑦ Extract rapidly 9~40 minutes , 32/48 samples can be extracted at the same time

## Parameters:

Model	BNP32	BNP48
Sample Quantity	32	48
Processing Volume	60 $\mu$ L-1000 $\mu$ L	
Sample Volume	20-500 $\mu$ L	
Sample Throughput	1-32	48
Magnetic Bead Recovery	>98%	
Extracting the Difference Between Holes	CV $\leq$ 3%	
Heating Temperature	8 independent heating modules, customize lysis and elution temperature (temperature range) according to your needs	
Oscillating Mixing	Low,medium and high three gears are adjustable, and the fluctuation range can be adjusted with the reagent volume	
Reagent Type	Magnetic bead open platform	
Extraction Time	15-40 min/round (depending on the reagent used)	
Internal Program	Be able to store >100 groups of programs	
Program Management	Powerful program editing capabilities to meet different reagent needs. U disk program import and export can be achieved	
Safety Door Design	After the safety door is opened,the program operation will be automatically suspended, and the program can continue to run after the safety door closed	
Built-in Air Duct	No	Yes
Ultraviolet Irradiation	Yes	
Package Size(W*D*H)	580*510*700mm	700*520*750mm
Gross Weight	51kg	80kg

# Nucleic Acid Extractor BNP96



## Application:

Automatic nucleic acid extraction and purification system for the extraction of DNA or RNA from a variety of materials, such as whole blood, tissue, throat swab, etc., without centrifugation or filtration operation.

## Features:

- ①. High purity extraction, easy to operate and fully automated.
- ②. High throughput, can process 1-96 samples at a time, save time.
- ③. With professional extraction kit, extraction process optimization.
- ④. Large program capacity, can store 1-100 groups of programs.
- ⑤. With constant temperature function to ensure the best reaction temperature in the purification process.
- ⑥. Friendly operation interface, easy to understand, no external computer, no special training.
- ⑦. Compact appearance, solid material, long design life.



Genetic Screening (E.SNP)



Tissue Typing



Chip Technology



Transgene Screening



Paternity Testing



Forensic Testing



Microbiology Testing



Plant Molecular Biology Research



## Parameters:

Model	BNP96
Screen	10.1 inch touch
Sample Volume	20 $\mu$ l-1000 $\mu$ l
Sample Capacity	1-96
Magnetic Bead Recovery	$\geq$ 98%
Extraction Time	15-40 minutes
Extracting the Difference Between Holes	CV $\leq$ 3%
Consumption	500W
Operating Temperature	RT - 120 C
Product Purity A260/A280	DNA $\geq$ 1.7-2.0; RNA $\geq$ 1.8-2.1
Shock Mixing	Adjustable Speed (1-3)
Reagent Type	Open System for Magnetic Bead Method
Program Storage	$\geq$ 100 groups
Safety Door Design	Safety door opened, the program operation will be automatically suspended, avoid cross-contamination
Disinfection Method	UV Light, Aerosol adsorption
Power Supply	AC100V-240V 50Hz/60Hz
External Size(W*D"H)	770*530*540mm
Package Size(W*D"H)	910*670*780mm
Gross Weight	95kg

# Automatic Nucleic Acid Extraction System BK-HS32



## Features:



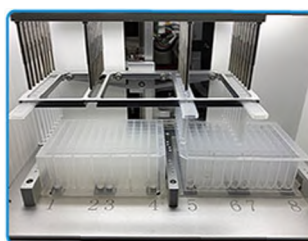
①. Friendly user interface:  
Smart & Intelligent display.  
With 10.1 inch LCD touch  
screen, Windows operating  
system.



②. Zero Aerosol Contamination  
High efficiency HEPA filter and  
Auto safety door protection function,  
effectively prevent aerosol contamination.  
HEPA filter and UV lamp replacement  
alarm functions.



③. UV Sterilization Lamp  
With manual or set automatic  
opening time UV lamp,  
sterilizing the operation area  
easily and effectively.



④. Integrated Shaking & Heating Module  
Mix deep wells while heating,  
saving extraction time.



⑤. Concave design heating belt fits the  
deep hole tube, ensure rapid and  
uniform temperature rise, improve  
the splitting and elution efficiency.

## Parameters:

Model	BK-HS32
Extraction Method	Magnetic Beads
Sample Capacity	32
Processing Volume	20~1000 $\mu$ l
Extraction Time	15~60min
Magnetic Bead Recovery	$\geq$ 98%
Extraction Difference Between Wells	< 3%
Magnetic Rod Flux	4500Gs
Temperature Range	Adjustable heating function, RT-100 °C
Oscillating Mixing	Vertical Mixing, low, medium, high three gears adjustable
Module Station	2
Protection Function	Star up self-checking, power off protection, high temperature alarm, over temperature protection, motor protection
Disinfection Method	8W UV Lamp
Illuminating Lamp	3.4W LED Lamp
Operation Interface	10.1 inch capacitive touch screen / Windows system
Barcode Scanning Function	Optional external barcode sanner
Project Storage	>1000
Interface	2 USB port, optional LAN port
Contamination Control	Class II HEPA filter can effectively filter the internal aerosol and prevent cross contamination
IAP Function	Firmware can be updated online at any time
Power Supply	AC100~240V 50Hz/60Hz
External Size(W*D*H)	450*440*532mm
Package Size(W*D*H)	538*538*750mm
Gross Weight	37kg

# Automatic Nucleic Acid Extraction System BK-HS96



## Application:

BK-HS96 is a high throughput, high sensitivity automatically extracted nucleic acid purification equipment, matching nucleic acid extraction kits is used to automatically complete the extraction of sample nucleic acid, flexible, stable result, low cost, equipped with efficient filtration device and safety gate design, it can effectively avoid cross infection and ensure the quality of nucleic acid extraction., guarantee the quality of nucleic acid.

## Features:

- ①. Display: 10.1 inch touch screen, easy to operate
- ②. Accurate temperature control and rapid temperature rise, can be adopted to actively reduce to room temperature and store samples in a short time at low temperature.
- ③. The module is integrated with shaking and heating, which can be mixed with shaking while heating, saving extraction time.
- ④. Equipped with ultraviolet disinfection lamp, HEPA high efficiency filter and safety door protection function, it can effectively prevent aerosol pollution.

## Parameters:

Model	BK-HS96
Nucleic Acid Extraction Method	Paramagnetic particle method
Sample Capacity	96-well
Sample Volume	20-1000ul
Extraction Time	11min-60min
Magnetic Bead Recovery	≥98%
Magnetic Flux of Bar	≥4500Gs
Operating Temperature	RT-105°C
Shock Function	Yes
Temperature Accuracy	0.1°C
Sample Protection Function	Power on self-check, power off protection, high-temperature alarm, over-temperature protection
Disinfection Method	UV Light
Safety Door Design	The instrument is suspended when the safety door is opened
Operating System	Windows system
Scanning	Optional
Storage	>1000
Interface	USB interface
Power Supply	AC100-240V 50Hz/60Hz
Package Size(W*D*H)	940*710*910mm
Gross Weight	110kg

# Automatic Nucleic Acid Extraction System BK-AutoHS96



## Introduction:

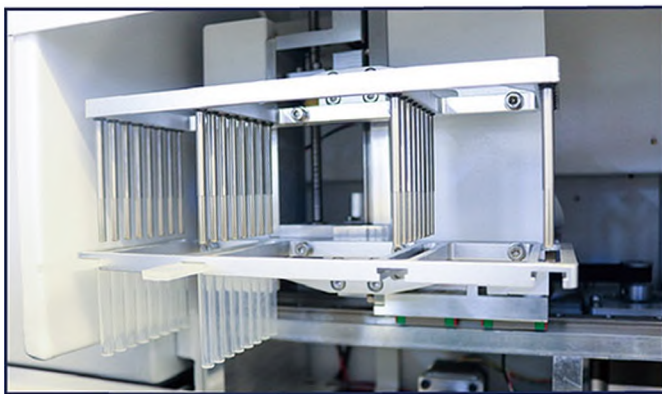
BK-AutoHS96 Automatic Nucleic Acid Extraction System is a fully automatic high-throughput equipment with automatic sample addition, nucleic acid extraction and PCR system configuration. With magnetic bead extraction reagents, it is suitable for automatic nucleic acid extraction and purification of 1-96 clinical samples of various types. The flexible automatic liquid handling function can accurately complete sample loading and reagent distribution according to requirements. Humanized software design, simple operation, no manual steps, greatly improving work efficiency.



**Robotic Arm**



**Working Zone**



**Extraction Area**

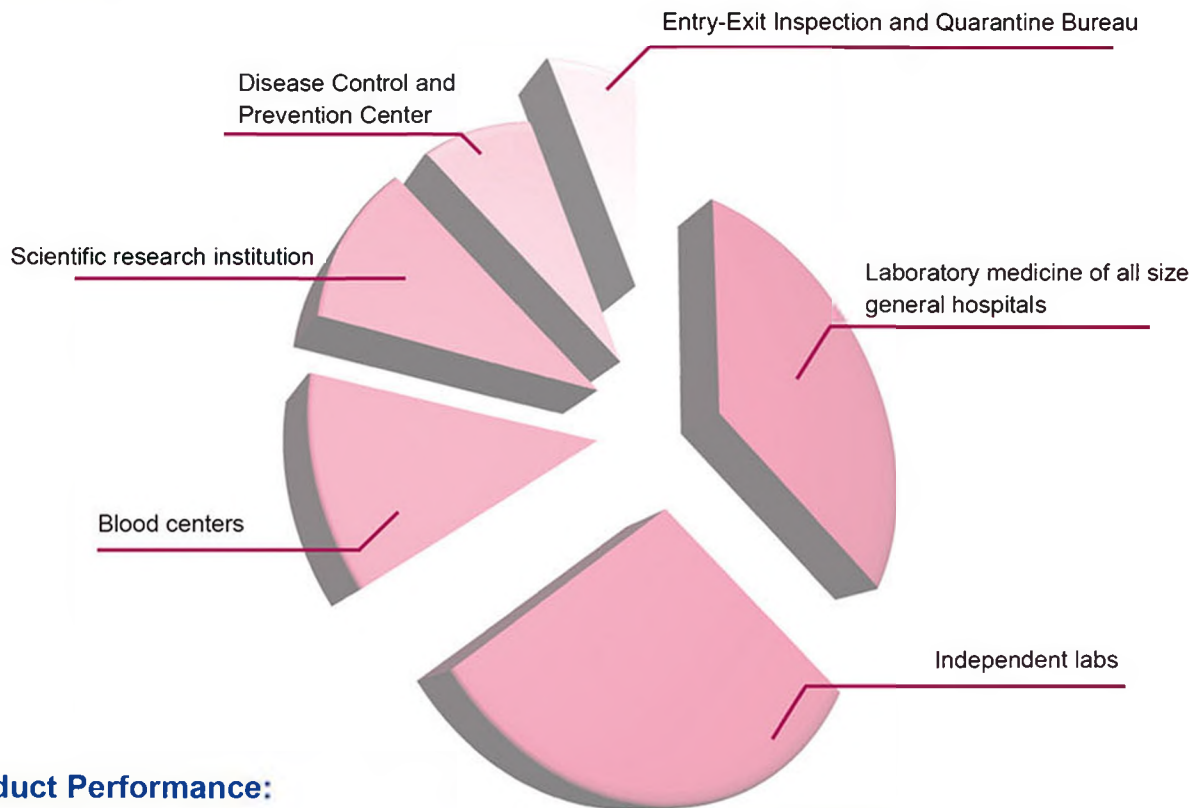


**LCD Display**

**Feature:**

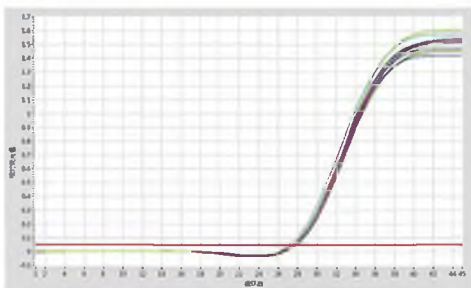
- \* Accurate pipetting, air pressure correction can adapt to extreme environments such as flat ground, plateau, island, etc., to ensure the accuracy of pipetting.
- \* 96 samples can be processed within 60 minutes, realizing high-throughput processing of samples, saving time and effort.
- \* Reagent position and PCR plate position, can be refrigerated at 4°C.
- \* With high-efficiency filter, ultraviolet disinfection and sterilization, and safety door functions, effectively prevent microbial pollution.
- \* Multi-threaded control and three-module extraction can run three different extraction programs at the same time.
- \* Intelligent temperature control, over-temperature protection function.
- \* Preset multiple experimental programs, strong compatibility, suitable for various types of sample graphic guides, visualized operations.
- \* Nucleic acid products can be allocated to the 2\*96 PCR reaction system to flexibly construct a variety of different PCR detection systems.

**Application:**



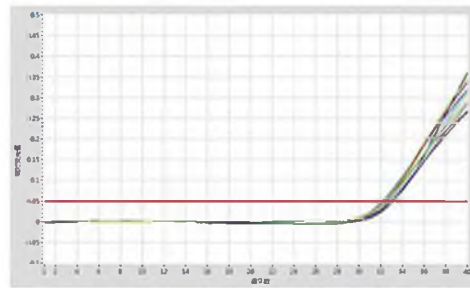
**Product Performance:**

**Precision**



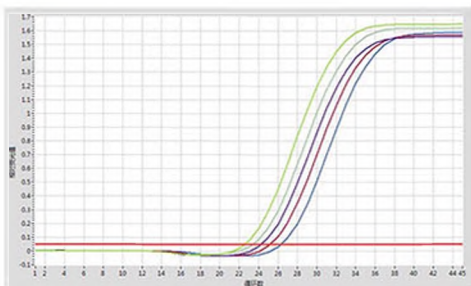
The same HCV samples were repeatedly extracted for 10 times and analyzed by qPCR. CV<3%

**Sensitivity**



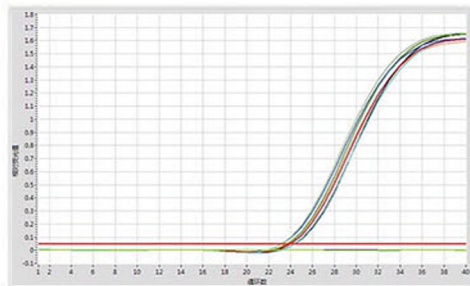
The HCV samples with the concentration of 151U/mL were extracted, and the detection rate was 10/10

**Linear**



The HCV positive samples were diluted with equal dilution, and the linear correlation coefficient was  $R^2 > 0.98$

**Cross Contamination**



HCV positive and negative samples were cross-extracted without cross-contamination



## Parameters:

Model	BK-AutoHS96
Extraction Method	Magnetic Bead Method
Working Mode	Automatic sampling + Nucleic acid extraction + PCR reaction system addition
Throughput	1-96, Linear slide type sample rack
Extraction Volume	20-1000ul
Processing Time	Complete the processing of 96 samples within 60 minutes (related to reagents)
Magnetic Bead Recovery	≥98%
Temp Range	RT-105°C, Lysis and elution position
Temp Accuracy	0.1°C
Heating Method	Dry bath heating
Heating Speed	RT-100°C≤6min
Shaking Function	Up and down oscillation (1-5 gears adjustable)
Extraction Position	6 (96-well deep well plate)
Robotic Arm	A robotic arm for adding samples and reagents
Pipetting Channel	2 Channel
Liquid Detection	Pneumatic liquid level detection principle, intelligent detection of blocked needle
Pipetting Tip	50ul,200ul,1000ul, Disposable black conductive needle with filter element
Tip Amount	2-3 Tips/sample
Pipetting Accuracy	10ul, CV≤3.0%, Accuracy≤5.0%, 50ul Tip 50ul, CV≤2.0%, Accuracy≤2.0%, 1000ul Tip 100ul, CV≤1.5%, Accuracy≤2.0%, 1000ul Tip
Sample Volume	2-1000ul
Working Zone	2 PCR positions with cooling function; 6 Tip positions for three types of Tips 2 Reagent positions (5ml freezing tube rack position with cooling function, one reserved position)
Protective Function	Start up self-test, Power-off protection, High temperature alarm, Over-temperature protection, Tip removal protection
Disinfection Method	UV lamp (30W*1, 8W*1)
Illumination Lamp	10W LED lamp
Audible Alarm	Yes (Red and blue blinking)
Safety Door Design	With safety lock function, the safety door is opened and the program is suspended
Display	10.1inch touch screen, Windows System
Scanning	Optional
Interface	LAN interface (Bi-direction LIS optional)
Contamination Control	Built-in air duct and HEPA filter can effectively filter internal aerosols and prevent cross-contamination
IAP Function	Firmware can be upgraded online at any time
Power Supply	110/220V,50/60Hz
External Size (W*D*H)	1420*850*1842mm
Package Size (WD*H)	1535*970*1180mm (Main instrument) 1540*970*1160mm(Base)
Gross Weight	360kg(Main instrument); 190kg(Base)

# Multi-type Sample DNA/RNA Extraction-Purification Kit (Magnetic Beads Method)



## Application:

The magnetic beads and buffer system with unique separation effect can be used to extract high-purity viral DNA/RNA from samples quickly, highly sensitively and efficiently.

The extracted and purified nucleic acid can be used in various common downstream experiments such as restriction digestion, reverse transcription, PCR, RT-PCR, Southernblot, etc.

## Method Advantage:

- ①. Safe and efficient
- ②. Less time requirement

## Extraction process:

Add lyse- add magnetic bead- separate magnetic bead-washing- Separate magnetic

## Product advantage:

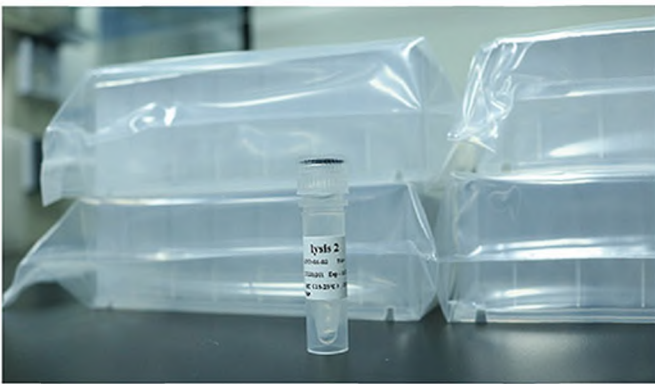
- ①. High sensitivity: High-quality nucleic acid can be extracted after the positive samples are diluted by 10<sup>4</sup> and 10<sup>7</sup> respectively 10<sup>4</sup>
- ②. Good repeatability: Good repeatability of extracting the same sample



**Reagent For BNP32/48**



**Reagent For BK-HS32/AutoHS96**



**Reagent For BNP96**



**Reagent For BK-HS96**

**Parameters:**

Name	Specification	Note Mark
Nucleic Acid Extraction Kit I	50T/Box	Manual
Nucleic Acid Extraction Kit II	32T/64T/96T/Box	BK-HS32/ BK-AutoHS96
Nucleic Acid Extraction Kit III	96T/Box	BK-HS96
Nucleic Acid Extraction Kit IV	96T/Box	BNP96
Nucleic Acid Extraction Kit V	64T/Box	BNP32&48

# Fluorescent Quantitative Detection System LEIA-X4



## Introduction:

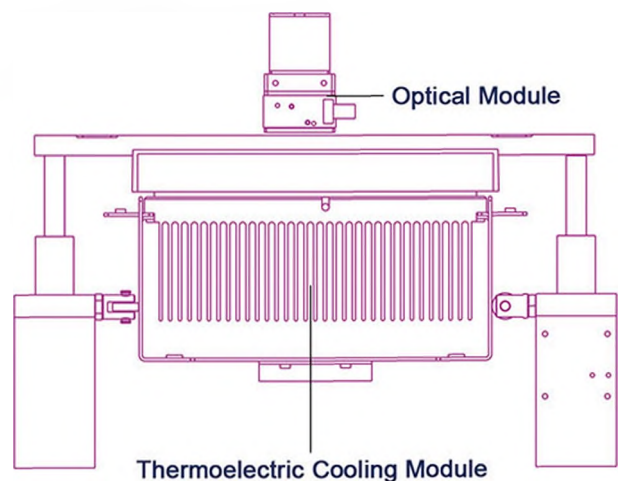
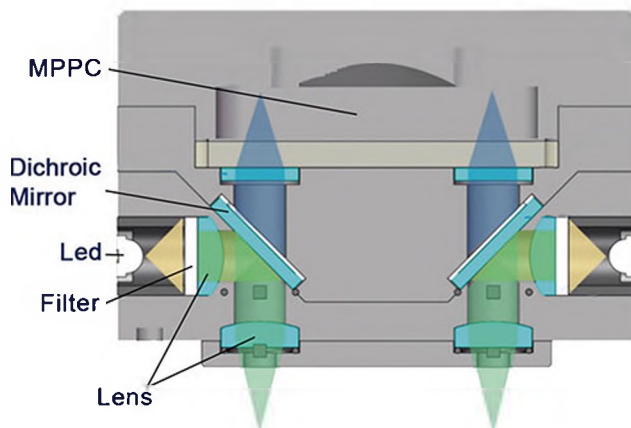
Real-time PCR is used for sensitive, specific detection and quantification of nucleic acid targets. We have developed powerful assay design algorithms, optimized qPCR reagent, intuitive data analysis software, and flexible instrumentation to help harness the power of qPCR across a rich and diverse set of applications. Explore our robust solutions for your qPCR-based research.

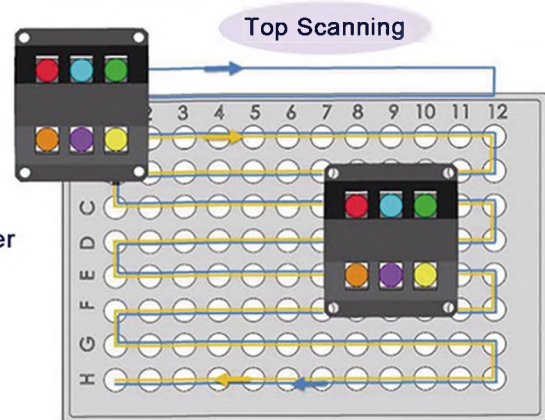
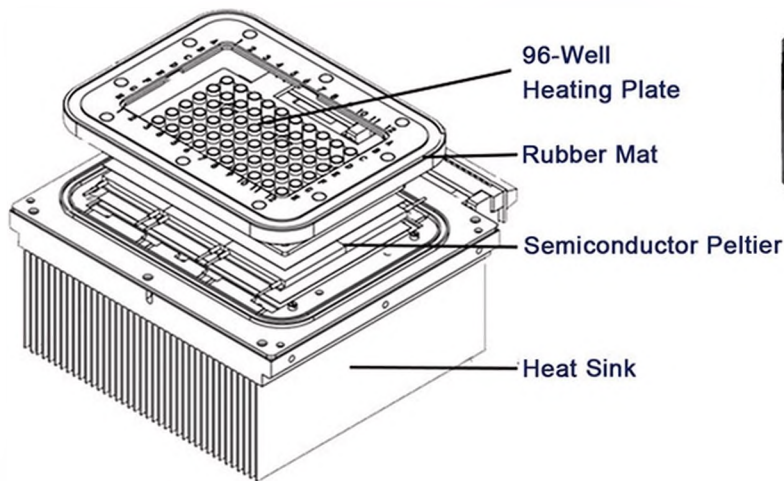
## Application:

It can be widely used for Infectious disease research, Food pathogen detection, Waterborne pathogen detection, Pharmaceutical analytics, Stem cell research, Pharmacogenomics research, Oncology and genetic disease research, Plant sciences and agricultural biotechnology.

## Working Principle:

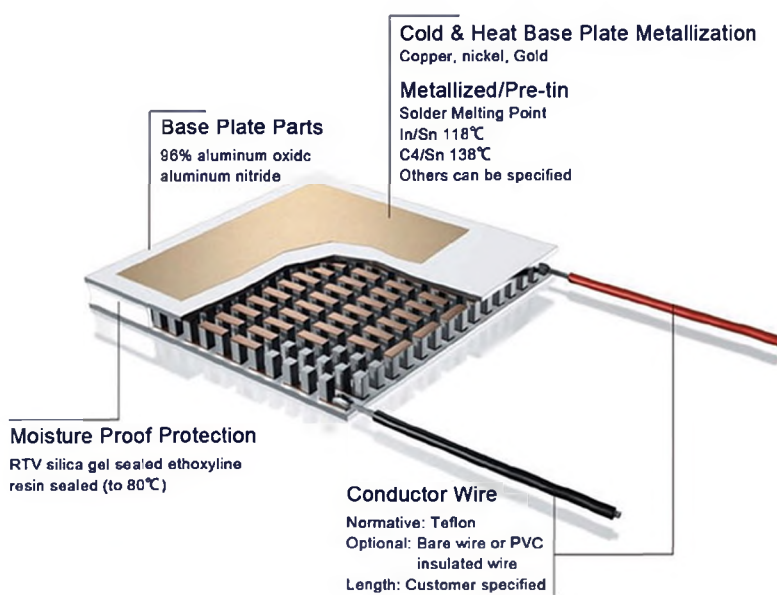
The temperature step change is controlled by the semiconductor peltier to realize PCR amplification. Use high-sensitivity MPPC unit to detect fluorescence; Program control channel switching, non-contact excitation/detection on the top structure, coordinated with motor control x and Y axis movement to achieve 96-hole scanning. Finally, accurate analysis is carried out through powerful software.





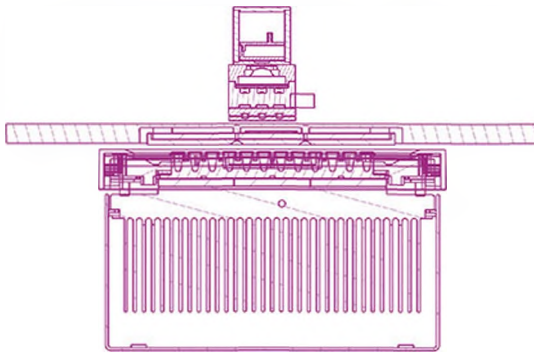
## Features:

- \* Excellent temperature control performance of the instrument, the maximum temperature rise and fall  $\geq 5.0^{\circ}\text{C}/\text{s}$ .
- \* No edge effect, no optical path correction, top excitation/detection, non-contact measurement.
- \* Fluorescence detection adopts MPPC sensor with high sensitivity.
- \* Long-life LED light source, stable emission wavelength, maintenance-free.
- \* 4-channel fluorescence detection, no cross interference between channels.
- \* User-friendly and fully functional software, flexible program setting, comprehensive analysis and reporting functions, all the parameters can be stored.



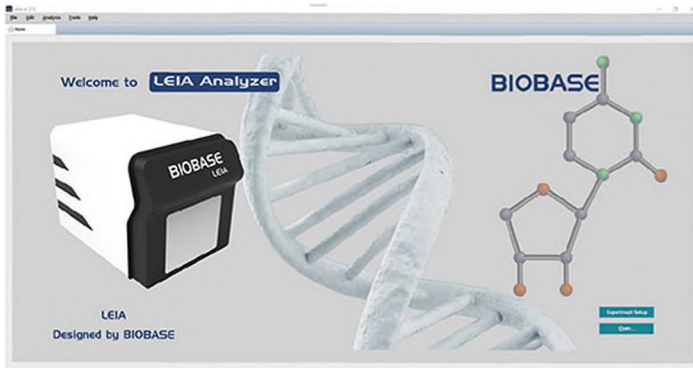
## Real-time PCR Hardware:

Thermoelectric cooling module (TEM) is a semiconductor device composed of many tiny and effective heat pumps. By applying a low-voltage DC power supply, heat will be transferred from one side of the TEM to the other side, resulting in a phenomenon that one side of the TEM becomes hot and the other side becomes cold. Since this phenomenon is completely reversible, when the polarity of the DC power supply is changed, it will be affected. Shift in the opposite direction. This product adopts a long-life series TEM, which provides longer life and more efficiency during thermal cycling.



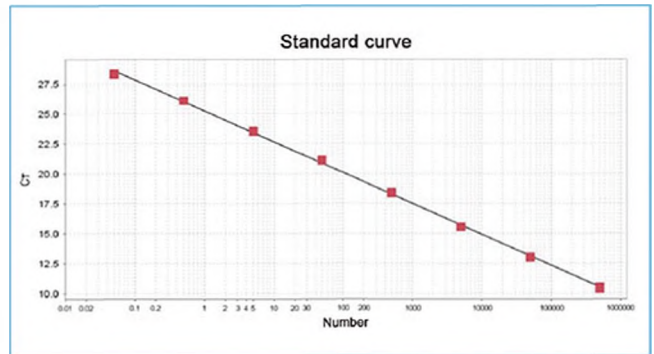
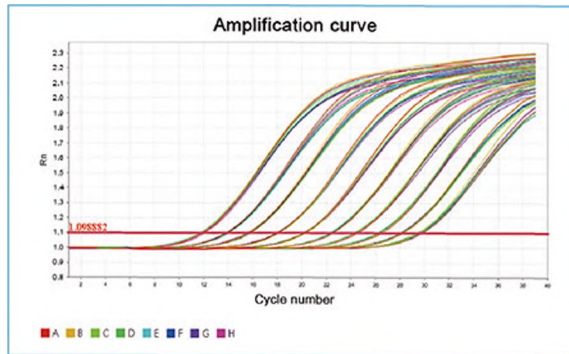
The integrated design of the scanning module and the heating cover module, relying on its own gravity to compress the heating plate and the reagent cover, and is supported by four compression springs to prevent the sample tube from being crushed; at the same time, the rubber pad around the heating cover is pressed to ensure that there is no external light source interference in the detection ; The bottom of the cam mechanism is used to support the spacing to ensure the smooth sliding of the heating module; the guide rail mechanism on both sides of the heating module prevents the module from shifting and ensures the accuracy of the mechanical scanning structure.

## Real-time PCR Software:

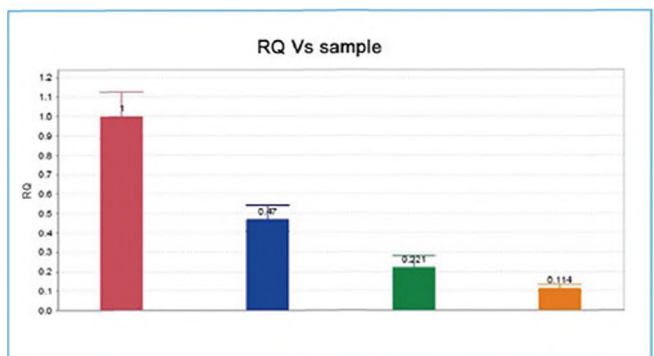
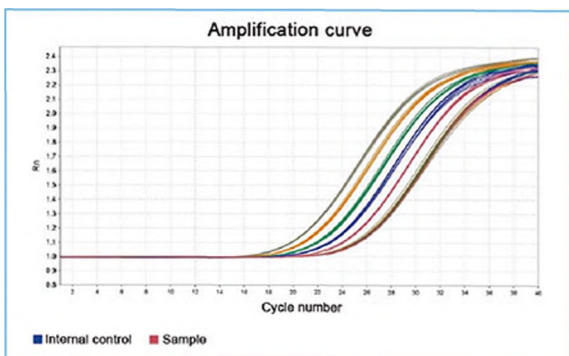


The software includes functions such as absolute quantification experiment, melting curve experiment, relative quantification (AACT) experiment, and genotyping experiment. Enter the attribute setting interface and select different function modules. Guided flow operation, convenient for users to quickly complete experimental settings. The software can open the recent experiment record template for easy viewing of recent experiments and the creation of new experiments.

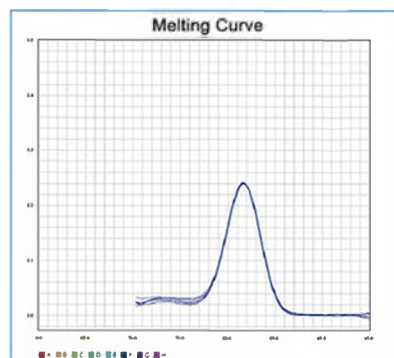
## Absolute Quantification Experiment:



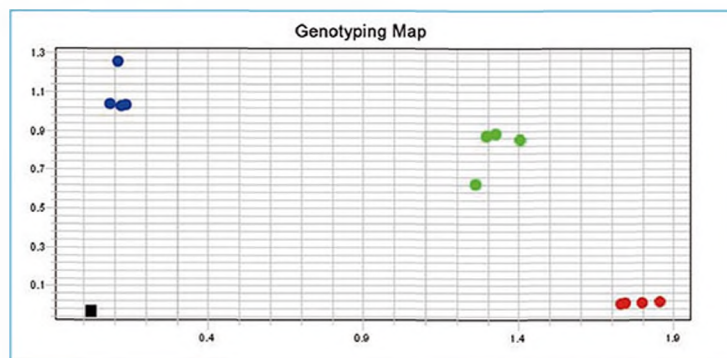
## Relative Quantification (AACT) Experiment:



## Melting Curve Experiment:



## Genotyping Experiment:



## Parameters:

Model	LEIA-X4			
Sample Capacity	96*0.1ml PCR plate, 12*8-strip tubes, 96*0.1ml single tube (Transparent Cover)			
Reaction System	10~50µl			
Dynamics Range	1-10 <sup>10</sup> copies			
Channel	4			
Emission Light	LED			
Detector	MPPC			
Detection Path	F1	F2	F3	F4
Suitable Probe/Dye	FAM/SYBR GREEN	VIC/JOE/ HEX/TET	ROX/TEXAS-RED	Cy5
Excitation Wavelength	455~680nm			
Detection Wavelength	510~730nm			
Fluorescence Detection Repeatability	CV≤2%			
Fluorescence Detection Accuracy	CV≤3%			
Fluorescence Detection Linearity	r≥0.995			
Module Temp. Range	4-99°C(resolution:0.1°C)			
Ramp Rate	5.0°C/s(max)			
Temp. Accuracy	±0.3°C			
Temp. Uniformity	≤ ±0.3°C			
Temp. Control Mode	Block mode			
Gradient Temp. Range	1-36°C			
Hot-Lid Temp. Range	100°C, Automatic Hot-lid			
Scanning Mode	Full plate scanning			
Programming	Max 100 Segments for Each Program, Max 99 Cycles			
Operation Mode	Continuous			
Scanning Time	8.5s			
Special Function	Absolute quantitative automatic analysis, relative quantification, SNP Analysis, melting curve analysis, etc.			
Operation System	Microsoft: Windows10			
Power Supply	220V,50/60HZ; 110V,60HZ			
Dimension(L*W*H) Mm	375*490 *365			
Port Method	USB Port			
Packing Size(L*W*H) Mm	645*565 *605			
Gross Weight	45			

## Novel Coronavirus (2019-nCoV) Nucleic Acid Detection Kit (Fluorescence PCR)



### Introduction:

This product selects the ORF1ab and N gene regions of 2019-novel coronavirus, and designs two sets of specific primers and fluorescent probes that cover two sites of the gene at the same time. In order to control the entire extraction and detection process, human  $\beta$ -Globin gene was act as a non-competitive internal control during the extraction and detection process. The RT-PCR reaction solution is pre-mixed, which is convenient, efficient and easy to operate. It utilizes high-efficiency Taq DNA Polymerase and has strong stability. The kit could be used for auxiliary diagnosis and epidemiological surveillance of 2019-novel coronavirus infection.

### Application:

Medical and health industry, food industry, biological industry, scientific research, etc.

### Advantage:

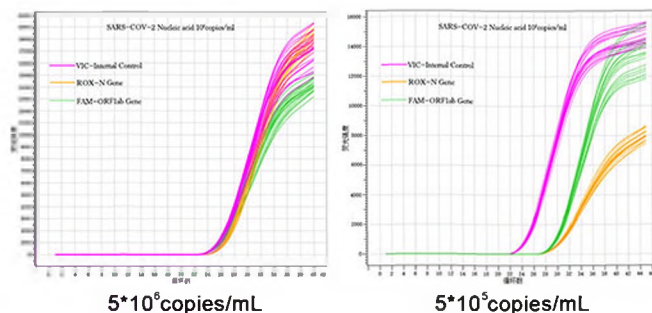
- \* Internal control: Human  $\beta$ -Globin gene as the internal control is included into the reagent to verify the validity of the experiment.
- \* High sensitivity: The lowest detection limit is 250 copies/ml.
- \* High specificity: Primers and probes are designed for specific fragments of two gene regions, which confirm each other to make the results more accurate. No cross-reactivity with other pathogens with the same site of infection or similar infection characteristics.
- \* Strong stability: CV of each channel is all <3%.
- \* Multiple Real-time RT-PCR detection: Each channel does not interfere with each other, and the amplification curve is S-shaped.
- \* Simple operation: one-step method to complete RT-PCR, The whole procedure can be detected within 80min.
- \* Fast speed: The PCR amplification time is less than 80 minutes.



**Experimental Data:**

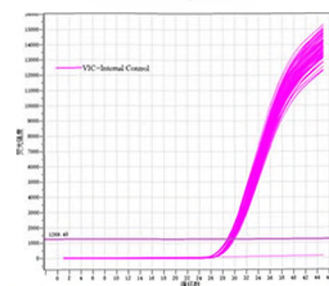
**1. Stability experiment:**

2019-nCoV nucleic acid samples at the concentration of  $5 \times 10^6$  copies/mL and  $5 \times 10^5$  copies/mL were tested by the 2019-nCoV RT-qPCR detection kit to verify the stability of the detection kit. The results are as follows:



**2. Stability experiment of internal control:**

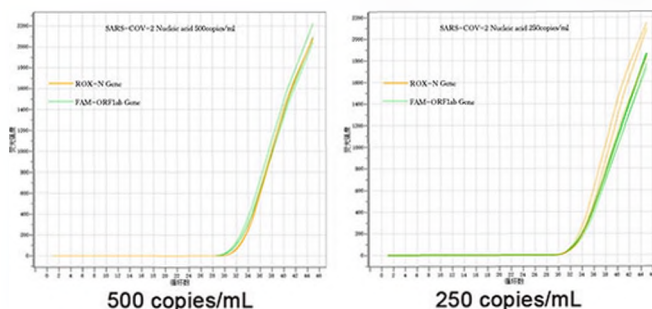
Repeat 96 times for the same negative sample on the BNP96 nucleic acid extraction system, and tested by the 2019-nCoV RT-qPCR detection kit to verify the stability of the internal control. The results are as follows:



Stability experiment of internal control

**3. Stability experiment of lower limit:**

2019-nCoV nucleic acid samples at the concentration of 500 and 250 copies/mL were tested by the 2019-nCoV RT-qPCR detection kit to verify the stability of the lower limit. The results are as follows:



**Technical Parameters:**

Product Name	Novel Coronavirus (2019-nCoV) Nucleic Acid Detection Kit (Fluorescence PCR)
Detection Principle	Fluorescence PCR
Detection Target	Novel coronavirus (2019-Ncov) ORF1ab and N gene
Applicable Instrument	Fluorescence quantitative PCR instrument
Storage Conditions	-20±5°C, keep away from light
Valid Period	Unopened ≥6 months; Opened ≥90 days
Sample Volume	7ul
Reaction Volume	20ul
Detection Limit	250 copies/ml
Stability	CV <3%
Interpretation of Positive Results	CT ≤38
Packing Specification	48T/box; 60 boxes/carton
Packet Size	500*500*500mm
Gross Weight	23kg

# Sterilization and Protection Products

## Disposable Face Mask (Medical)

### Introduction

Medical face masks can help reduce the chance of spreading airborne diseases. It is applicable to the health care of the wearer in the general medical environment.

### Features

1. Moderate tightness provide coziness for ears.
2. Light and very low resistance to breathing.
3. Three-layer anti-wrinkle design.



### Technical Parameters

Model	Disposable Face Mask (Medical)
Type	Earloop type
Structure	Consisting of mask body, mask band and nose clip
Raw Material	65% non-woven fabric, 35% melt-blown fabric
Instruction	Turn folded side out, nose bar side up
Three Layers Material	The molding layer is spunbonded non-woven fabric The filter layer is melt-blown non-woven fabric The affinity layer is spunbonded non-woven fabric
Standards	EN14683:2019+AC2019
External Size	175*95mm (with 3 layers)
Recommended Using Time	4~6 hours
Validity	2 years
Bacterial Filtration Efficiency(BFE)	≥95%
Airflow Resistance(Pa/m <sup>2</sup> )	49 Pa/cm <sup>2</sup>
Storage Condition	Keep in a sealed, cool and dry condition
Packing Size / Gross Weight	500*400*500mm(10pcs/bag, 2200pcs/carton) / 10kg 725*560*440mm (10pcs/bag,5bags/box, 2400pcs/carton) / 14.5kg

# Disposable Face Mask

## Introduction

It is widely used in ordinary environment, to block the mouth and nasal cavity from exhaling or spraying pollutants by covering the user's mouth, nose and jaw.

## Features

1. Moderate tightness provide coziness for ears.
2. Light and very low resistance to breathing.
3. Three-layer anti-wrinkle design.



## Technical Parameters

Model	Disposable Face Mask
Type	Flat earloop type
Structure	Consisting of mask body, mask band and nose clip
Material	PP non-woven fabric, rubber band
Instruction	Turn folded side out, nose bar side up
Three Layers Material	The molding layer is spunbonded non-woven fabric The filter layer is melt-blown non-woven fabric The affinity layer is spunbonded non-woven fabric
Standards	GB/T 32610-2016
Product Protection Effect Level	Level A
External Size	180*95mm (with 3 layers)
Recommended Using Time	4~6 hours
Validity	2 years
Storage Condition	Keep in a sealed, cool and dry condition
Packing Size / Gross Weight	500*400*500mm(10pcs/bag, 2200pcs/carton) / 10kg
	530*400*400mm (50pcs/bag, 2500pcs/carton) / 9kg
	500*400*500mm(10pcs/bag, 2000pcs/carton) /8.74kg
	486*388*350mm (50pcs/box, 1600pcs/carton) / 7.2kg

# Medical Surgical Mask

## Introduction

Medical surgical masks are worn by clinical medical staff to cover the user's mouth, nose and jaw, and provide a physical barrier to prevent direct transmission of pathogenic microorganism, body fluids, particles, etc.

## Features

- \* Moderate tightness provide coziness for ears
- \* Light and very low resistance to breathing
- \* Three-layer anti-wrinkle design



## Technical Parameters

Model	Medical Surgical Mask(Non-sterile)
Type	Ear loop type
Structure	Consisting of mask body, mask band and nose clip
Material	Polypropylene spunbond nonwoven fabric Polypropylene meltblown nonwoven fabric
Instruction	Turn folded side out, nose bar side up
Three Layers Material	The molding layer is polypropylene spunbond nonwoven fabric The filter layer is polypropylene meltblown nonwoven fabric The affinity layer is polypropylene spunbond nonwoven fabric
Bacterial Filtration Efficiency(BFE)	≥95%
Particulate Filtration Efficiency(BFE)	≥30%
Product Protection Effect Level	Level A
External Size	175*95mm (with 3 layers)
Recommended Using Time	4~6 hours
Validity	2 years
Storage Condition	Keep in a sealed, cool and dry condition
Packing Size / Gross Weight	500*400*500mm(10pcs/bag, 2200pcs/carton) / 10kg 725*560*440mm (10pcs/bag,5bags/box, 2400pcs/carton) / 14.5kg

## KN95 Mask



### Features:

- \* Adjustable nose piece for extra comfort.
- \* At least 95% filtration efficiency against certain non-oil particles.
- \* Disposable, single-use, breathable, light and environment-friendly.
- \* High elasticity ear loop help fit different users and dual point attachment helps provide a secure seal.

### Technical Parameters:

Model	KN95 Mask
Type	Ear loop type
Structure	Consisting of mask body, mask band and nose clip
Material	5 ply
	1 ply Friendly Skin Cotton; 2ply melt-blown filter layer;
	1 ply Moisture wicking diversion layer; 1ply PP non woven
Product Size	165*105mm (adult)
Color	White
Protection Range	Suitable for filtering particulate pollution such as pollen and pollen in the air under daily environment PM2.5 isolate bacteria and viruses
Packing Size / Gross Weight	580*450*440mm(2 pcs/bag, 50 pcs/box, 1200pcs/box) / 10kg

## Biological Isolation Chamber



### Features

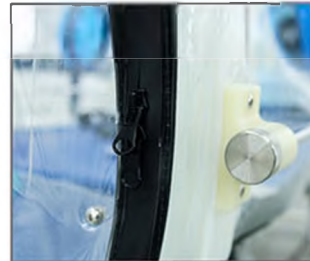
1. The chamber liner is made from a special TPU film and strengthened by inserting ABS poles along each side of the structure.
2. The "all around" zipper system allows for the chamber to open completely in order for easy operation.
3. The chamber has 10 integrated glove portals on three sides to allow for easy access to the patient and 2 utility portals used for infusions and other medical equipment.
4. Belt system enables the patient to be fastened while in the chamber or the chamber is securely fastened to a stretcher or bed.
5. Isolation chamber is a fully collapsible unit that requires minimal storage space and is ready for use within minutes.
6. The chamber can be used with a folding stretcher or stretcher trolley, which will be easy to move the patient.



Aluminum support & ABS Poles



Negative Generation System



Zipper System



Utility Portals



HEPA Filter



Belt



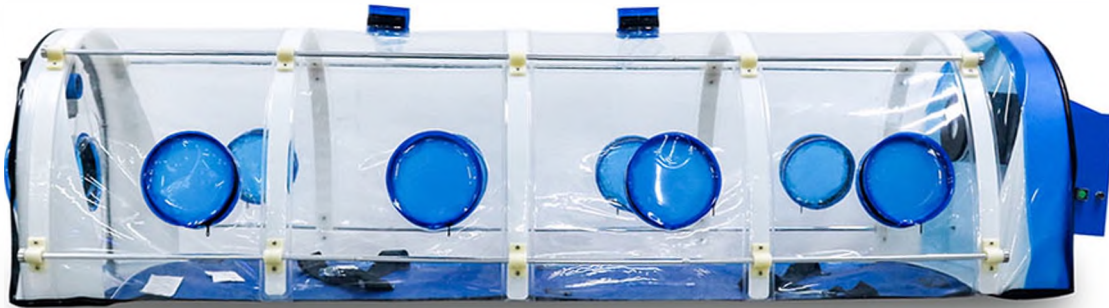
Glove Portals



Charger



Optional



## Introduction

Isolation chamber is equipped with its own negative pressure filtration system to provide maximum protection and operational safety for both the contaminated person or item and the operational team.

## Technical Parameters:

Model	BFG-IV	BFG-VI
Unfolded Size (L*W*H)	1900*560*500mm	1900*680*500mm
HEPA Filter	3pcs, 99.999% efficiency for 0.3 $\mu$ m particles	
Ventilation	$\geq$ 50L/min	
Chamber Noise	$\leq$ 65dB(A)	
Alarm	Audio and visual alarm for internal pressure insufficient and low power	
Negative Pressure	$\geq$ 15Pa in two minutes after power on	
Standard Accessory	The main chamber, 3pcs disposable HEPA filter, Negative generation system, 5 pairs PE gloves, Battery and charger, 8 long aluminum rods, 4 short aluminum rods, 8 knurled bolts	
Consumables	HEPA filter (3pcs/set), PE gloves	
Disinfection	Disinfect the chamber with formalin and neutralize with ammonium hydrogen carbonate	
Optional	Folding stretcher; Stretcher trolley	
Load-Bearing	Up to 150kg	
Power Supply	DC12V power adapter. Battery charging for 8 hours and continuously using for 4~8 hours	
Package Size (L*W*H)	860*860*760mm	
Net Weight	18kg	20kg
Gross Weight	40kg	42kg

## Nucleic Acid Collection Safety Station

### Application:

Nucleic Acid Sampling Workstation is a product designed specifically for throat and nose swab sampling. The equipment is equipped with a ventilation and purification system to send clean and safe air into the internal space and maintain a relative positive pressure inside. By constructing an isolated positive pressure space, the interior air of the cabin is isolated from the exterior, so as to avoid the external air entering the interior of the cabin, thus effectively protecting the safety of the internal medical staff and avoiding their infection due to sampling work. While ensuring safety, the operation flexibility and comfort of medical staff are improved, which saves detection time and improves detection efficiency.



NCS-I

NCS-III

### Features:

- \* The main body adopts assembled board house structure, which is convenient for transportation and installation, and can be customized flexibly to adapt to various sites;
- \* Equip with high efficiency filter, which can provide a 100-level clean positive pressure environment, effectively isolate medical staff, and ensure the safety of medical staff;
- \* The front window is equipped with long rubber gloves, dialogue system, so that the sampling is convenient and fast, the whole process without direct contact with the sampling personnel;
- \* Avoid the sense of bondage and discomfort caused by wearing protective clothing, effectively reduce the work intensity and save protective materials;
- \* Built-in well-known brand hanging air conditioning, providing a good working environment for medical staff;
- \* Can accommodate more than one staff working at the same time, convenient cooperation to complete the task;
- \* Adapt to outdoor installation and use, or other need to protect the scene.





NCS-II

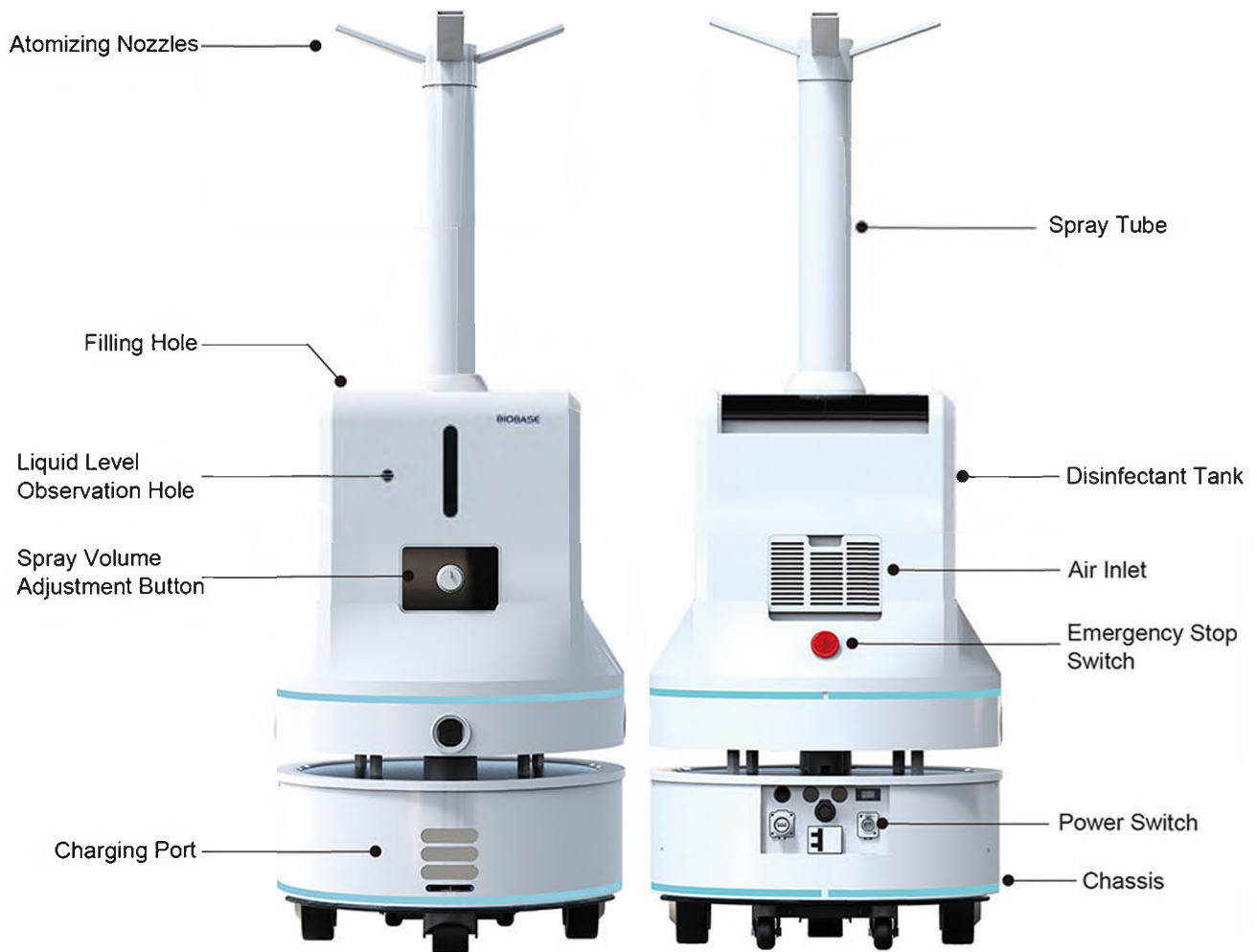
Technical Parameters:

Model	NCS-I	NCS-II	NCS-III
Outer size(L*D*H)mm	1750*1600*2700	3300*2000*2700	2200*1750*2600
Inner size(L*D*H)mm	1000*1000*2200	2700*1350*2100	1800*1300*2150
HEPA Filter	99.995% at 0.3um particle		
Noise	≤75dB(A)		
Power	3000W		
Illumination level	≥350Lux		
UV disinfection equipment	Philips		
Interphone	Main engine and auxiliary engine		
Air conditioner	Yes		
Air fan	Centrifugal fan		
Pass box		Yes	
Infrared automatic thermometer			Yes
Smart password fingerprint lock			Yes
Intelligent waterproof induction bucket			Yes
Packing size(mm)	1920*1760*2860	3470*2160*2860	2450*1950*2860
Gross weight(kg)	380	650	500

# Atomizing Disinfection Robot

## Introduction:

The atomizing disinfection robot is by quickly atomizing the disinfectant and automatically spraying into the disinfection area to get the air effectively purified. Using 100mg/L hypochlorous acid disinfectant, according to the amount of 5ml/m<sup>3</sup>, continue to spray evenly into the space to disinfect.



Hospital



Airport



Shopping Mall



Office

## Applications:

It can be widely used in hospitals, airports, office buildings, shopping malls, schools, factories and other public places.

**Features:**

- \* The large-capacity 16L disinfectant tank can continuously disinfect for more than 5 ~ 6 hours, and the disinfection coverage is up to 4000 ~ 5000m<sup>2</sup>.
- \* Support APP control, no-touch automated disinfection greatly improve the safety of use in the disinfection process.
- \* Two disinfection modes: timed disinfection and immediate disinfection.
- \* With autonomous navigation function, lidar obstacle avoidance, can fully cover the required area.
- \* Support automatic return to charge, human assistance isn't required.
- \* When the disinfectant is below the warning position, it will return to the waiting area and turn off the spray device automatically.



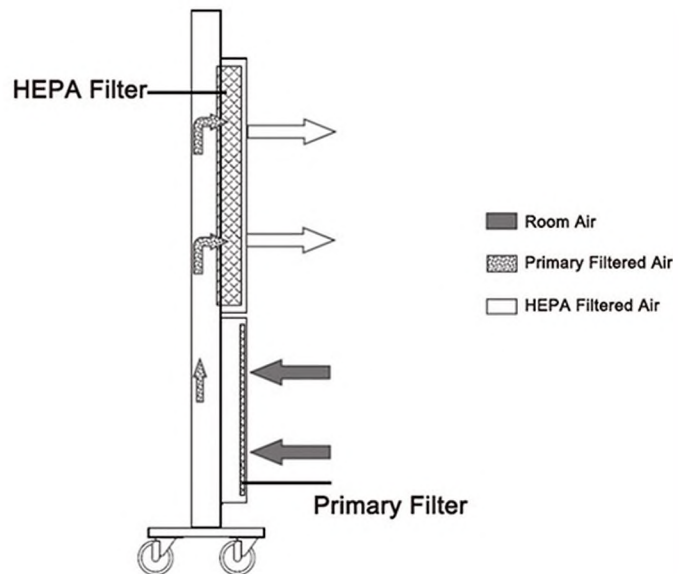
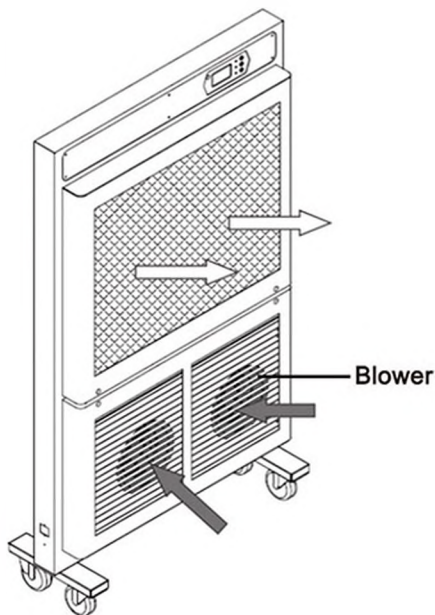
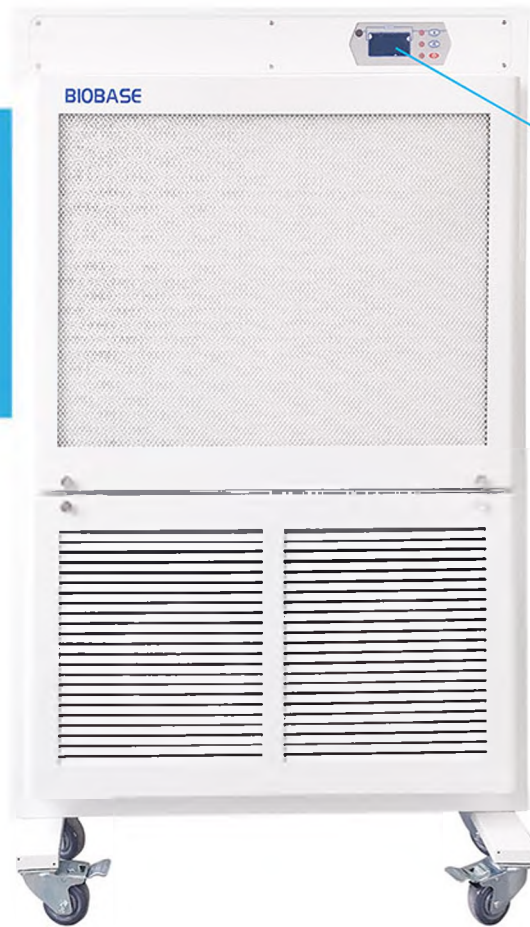
APP Interface

**Technical Parameters:**

Model		BKS-Y
External Size(mm)		φ500*1335
Atomization Efficiency		2L~3L/H(adjustable)
Disinfectant Capacity		16L
Spray Diameter		5-6m
Disinfection Medium		Hypochlorous acid, Chlorine dioxide, Hydrogen peroxide, Peroxyacetic acid, etc.
Spray Method		Four-direction spray, large opening spray(optional)
Moving Way		Autonomous path planning and automatic navigation
Moving Speed		0~1m/s
Safety System		Lidar obstacle avoidance, power-off protection of disinfectant shortage
Consumption		150W
Drive Method		Differential drive
Ability to Cross Obstacles		±10mm
Gradeability		≤8°
Driving Channel Width		≥700mm
Noise		≤50dB
Operating Time		5~6h
Battery		Lithium battery 28AH 24V, rechargeable 10,000 times
Charging Time		3~4h
Power Supply		AC110/220V, 50/60Hz
Package Size	Main Body	430*430*660mm
	Chassis	650*650*770mm
Gross Weight	Main Body	10kg
	Chassis	62kg



# Air Purifier



## FEATURES

Air purifier is an air purification equipment, which is widely used in hospital, small clinic, laboratory, office, meeting room and house etc. it can protect your life and your health through filtering dust, germ and virus in the air.

## ADVANTAGE

1. Low noise.
2. LCD display
3. Remote control.
4. Adjustable air velocity.
5. Thorough sterilizing with UV Lamp.
6. Mobile Type, Wall Hanging Type, Suction Ceiling Type.

## TECHNICAL PARAMETERS

Model	QRJ-128
External Size(W*D*H)	900*120*1500mm
Filter	Primary Filter, HEPA filter
HEPA Filter	99.99% efficiency at 0.3μm
UV Lamp	Germicidal UV lamp, Emission of 253.7 nanometers for most efficient decontamination
Optimal Space	≤20m <sup>2</sup>
Noise	≤58dB
Consumption	240W
Adjustable Air Speed	3 levels
Power Supply	AC220V±10%, 50/60Hz; 110V±10%, 60Hz
Cleanness At Outlet	Class 100
Gross Weight	78kg
Package Size(W*D*H)	1800*440*1050mm



## Mini PCR Workstation



### Introductions:

The Mini PCR Workstation is the world's exclusive nucleic acid detection workstation, specially developed for fever clinics and small clinical laboratories. Integrate traditional PCR laboratory functions into one device. Allow more small laboratories to have PCR detection capabilities.

**Application:**

It is suitable for rapid nucleic acid detection in the fever clinic and emergency department of hospital, other small clinical laboratories.

**Features:**

- \* Global exclusive
- \* Small dimension, save space, economical and convenient.
- \* Automatic air speed adjustable with filter block.
- \* With memory function in case of power-failure.
- \* Interlock function: UV lamp and front window; UV lamp and blower, fluorescent lamp; Blower and front window.
- \* Audio and visual alarm: Filter replacement, window over height, abnormal air flow velocity etc.
- \* Time reserve function: This can set the UV lamp and fan working time.



LCD Display



Work Zone



Waterproof Socket

**LCD Display:**

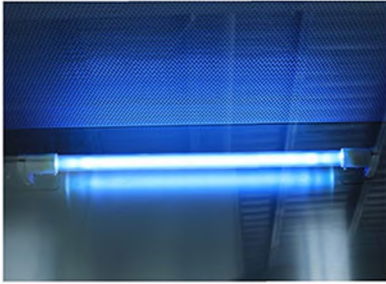
- \* Large Digital LCD display is easy to monitor.
- \* All the safety parameters at a glance and ergonomically sized control panel improves User interface.

**Work Zone:**

- \* Work zone is made of 304 stainless steel, Unibody design.

**Waterproof Socket:**

- \* 2 waterproof sockets are located in the each area, for optimum convenience of using small devices inside the cabinet.



UV Lamp



Front Window



Windproof Plate

### UV Lamp:

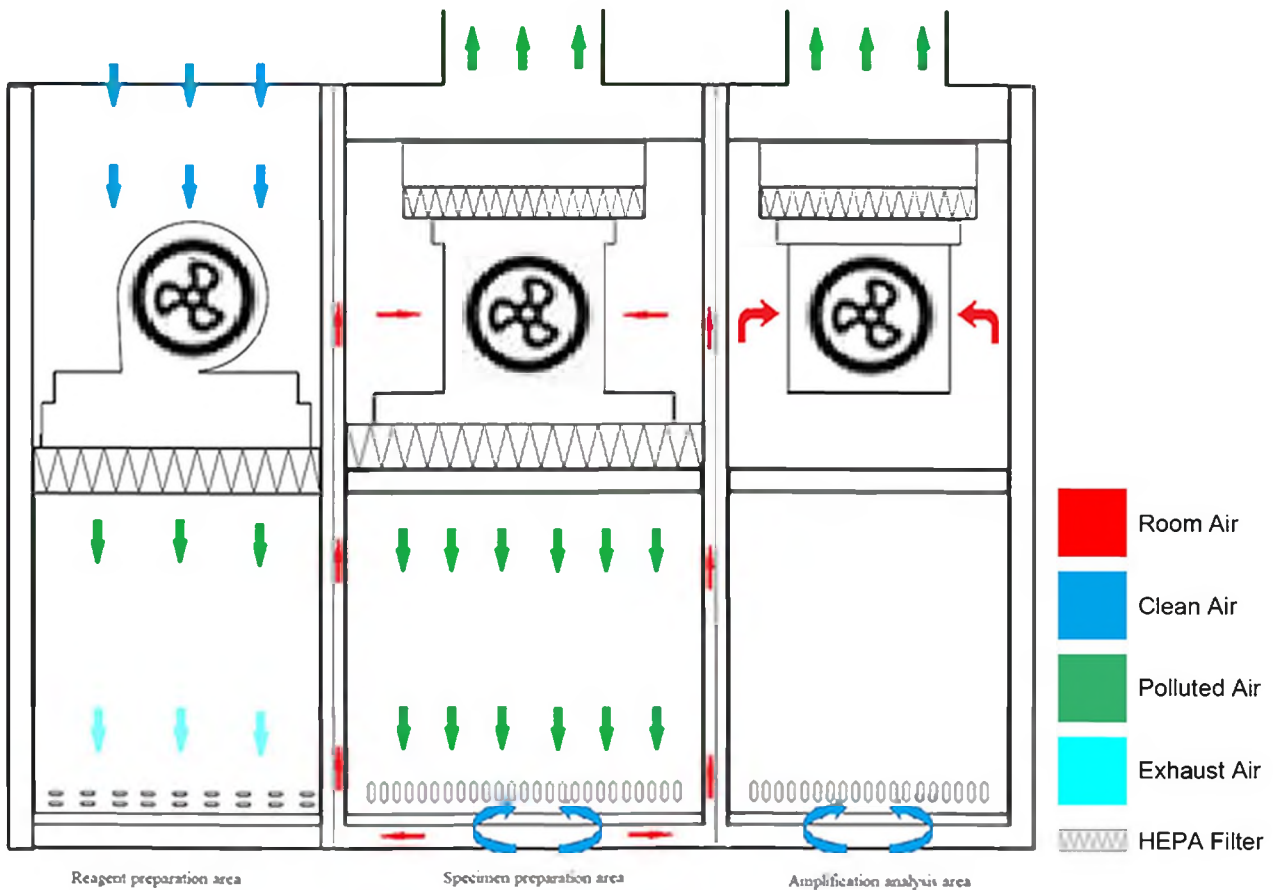
- \* Emission of 253.7 nanometers for most.
- \* Efficient decontamination.

### Front Window:

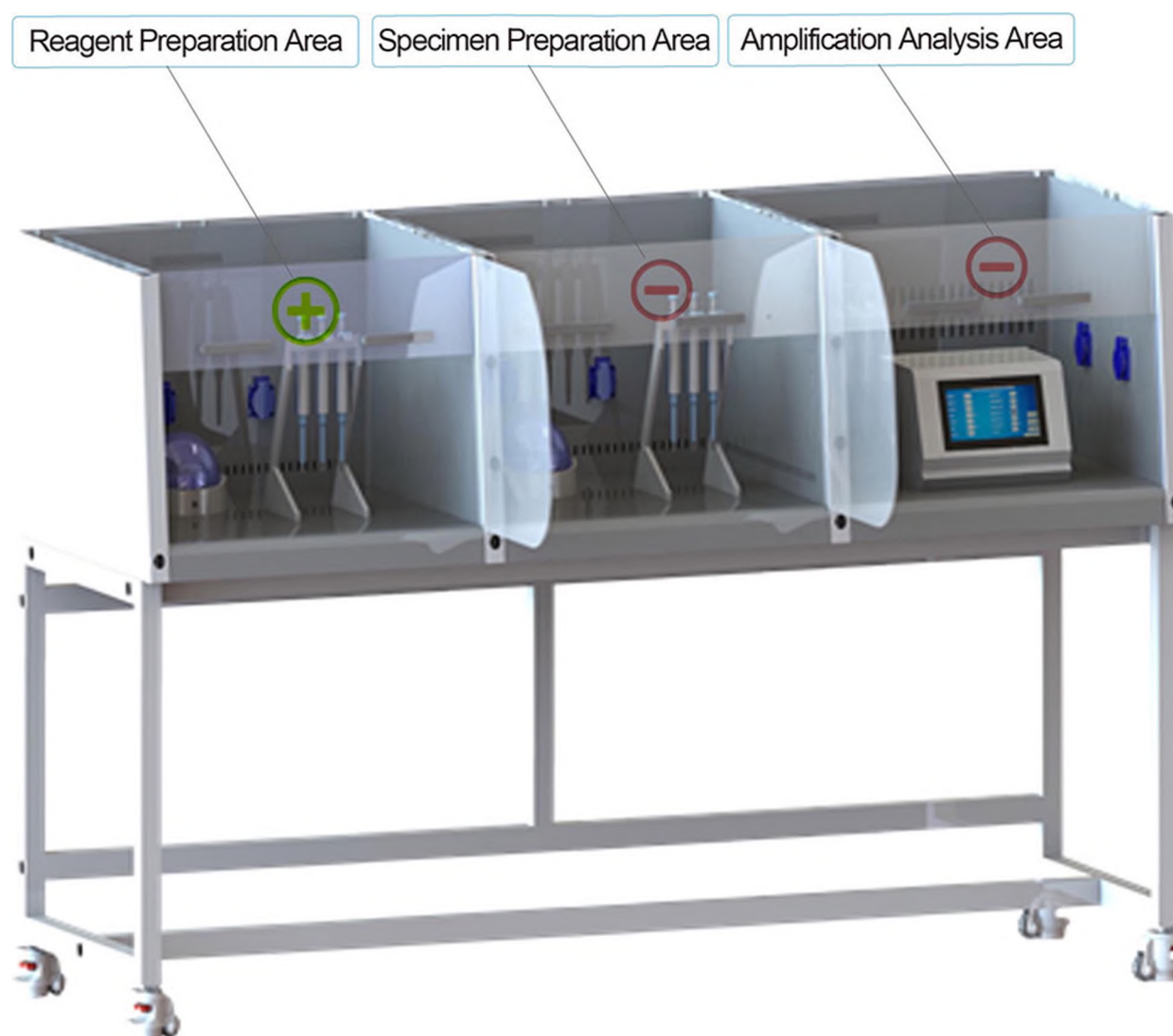
- \* Toughened glass > 5mm, anti UV.

### Windproof Plate:

- \* Effectively isolate the cross-effects of airflow in various areas.





**Reagent Preparation Area:**

Positive pressure, vertical laminar flow design, equipped with primary filter and HEPA filter, which can protect the reagent preparation from external pollution and protect the reagent.

**Specimen Preparation Area:**

Negative pressure; the air inlet is through the front window glass door, the bottom of the operation area is returned to the air, and the top is exhausted; the upper and lower two HEPA filters are equipped to protect personnel from harmful aerosol infection and protect samples from external pollution.

**Amplification Analysis Area:**

Negative pressure, the air inlet is through the front window glass door, the bottom of the operation area is returned to the air, and the top is exhausted, and the HEPA filter can protect both the personnel and the environment.

**Technical Parameters:**

Model		PCR1600	PCR2100	PCR2500
External Size(L*W*H)		1600*710*1900mm	2100*710*2000mm	2500*850*2100mm
Reagent Preparation Area	Operating Area Size (L*W*H)	440*560*510mm	640*560*510mm	640*560*610mm
	Pressure	Positive		
	Airflow Velocity (m/s)	0.3~0.45		
	Airflow Volume (m <sup>3</sup> /h)	190~290	290~430	380~560
	Exhaust Type	/		
Specimen Preparation Area	Operating Area Size (L*W*H)	560*560*510mm	660*560*510mm	1060*560*610mm
	Pressure	Negative		
	Airflow Velocity (m/s)	Downflow: 0.33±0.025, Inflow: 0.53±0.025		
	Airflow Volume (m <sup>3</sup> /h)	210	250	400
	Exhaust Type	TypeA2, 30% exhaust, 70% recirculation		
Amplification Analysis Area	Operating Area Size (L*W*H)	440*560*510mm	640*560*510mm	640*560*610mm
	Pressure	Negative		
	Airflow Velocity (m/s)	≥0.4		
	Airflow Volume (m <sup>3</sup> /h)	≥160	≥180	≥180
	Exhaust Type	30% exhaust, 70% recirculation	100% exhaust	100% exhaust
ULPA Filter	Four, 99.999% efficiency at 0.12μm.			
Clean Level	Class 100(ISO Class 5)		Class 100, Except Amplification Analysis Area	
Front Window	Manual, Toughened glass, Anti UV			
Max Opening	400mm			480mm
Noise	≤67 dB (A)			
Vibration	≤5μm			
UV Lamp	15W*3, UV timer, UV life indicator			30W*1,15W*2
LED Lamp	4W*6		8W*6	8W*4,12W*2
Illumination(lx)	≥500 (Each area)		≥650 (Each area)	
Sockets	The load of two sockets (Each area): 500W, total 6 sockets			
Display	Touch Screen			
Control System	Microprocessor			

Model	PCR1600	PCR2100	PCR2500
Visual and Audio Alarm	Filter replacement, window over height, abnormal air flow velocity		
Work Surface Height	750 mm		
Material	Work Zone: 304 stainless steel		
	Main Body: Cold-rolled steel with anti-bacteria powder coating		
Power Supply	AC220V±10%, 50/60Hz; 110V±10%, 60Hz		
Consumption	600W, total 2100W (With load)		1000W, total 2500W
Standard Accessory	LED lamp*6, UV lamp*4, Windproof plate*2 (Only for PCR2100/2500), Waterproof sockets*6		
Package Size(W*D*H)	1750*980*1400mm	2250*980*1400mm	2650*1120*1400mm
Gross Weight	400kg	450kg	500kg

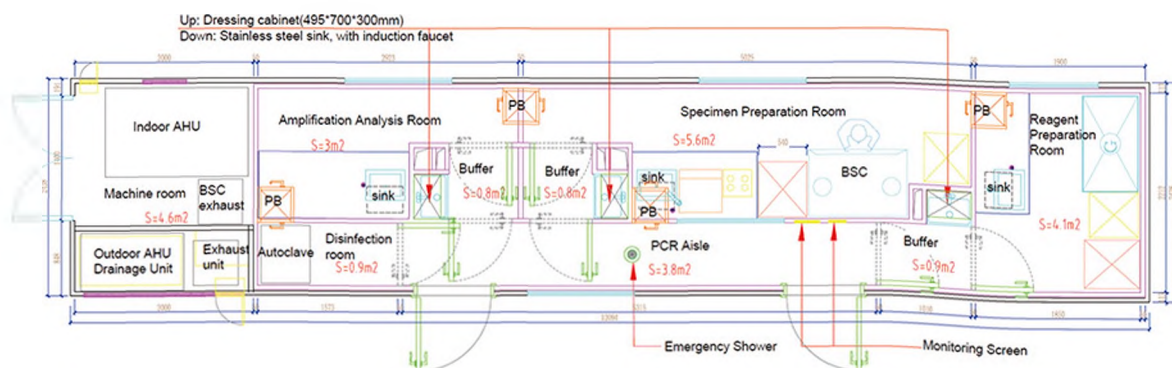
Mini PCR Workstation Equipment List:

Item	Name	Model	Quantity
Reagent preparation area	Pipette	0.5-10ul	1
	Pipette	10-100ul	1
	Pipette	100-1000ul	1
	Centrifuge	MINI-7	1
	Mixer	BJPX-VW	1
	Tips	10ul,100ul, 1000ul	/
	Centrifuge tube	1.5ml	/
	8-strip tube	0.2ml	/
	QPCR kit	Covid-19	/
Specimen preparation area	Pipette	0.5-10ul	1
	Pipette	10-100ul	1
	Pipette	100-1000ul	1
	Disposable Virus Sampling Collector (One Step method)	/	/
	Tips	10ul,100ul, 1000ul	/
	Centrifuge tube	1.5ml	/
	Centrifuge	MINI-7	1
	Mixer	BJPX-VW	1
	Nucleic Acid Extraction System (only for PCR2500)	BNP32 or BNP8	1
Amplification analysis area	QPCR	LEIA-X4	1
Other related equipment	Biosafety Transport Box	BTB-L5	1
	-25°C Freezer	BDF-25V270	1
	-86°C Freezer	BDF-86V158	1

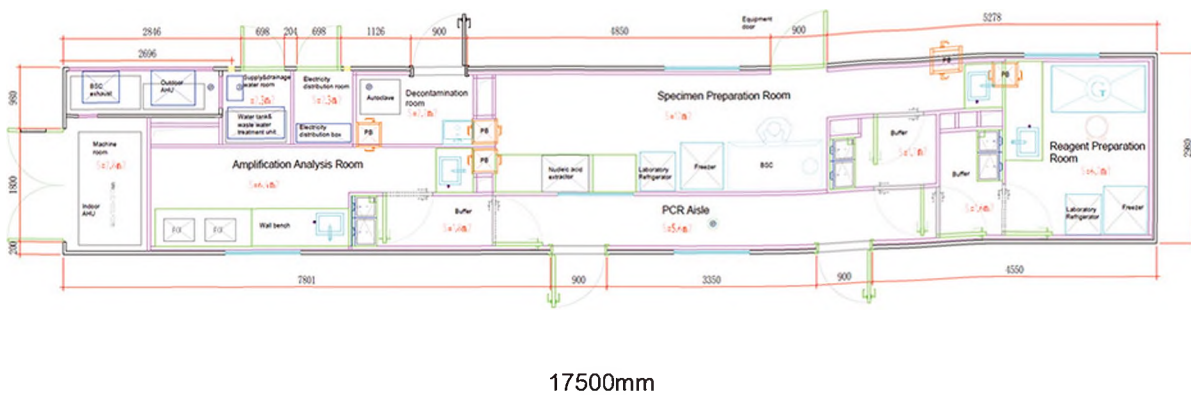
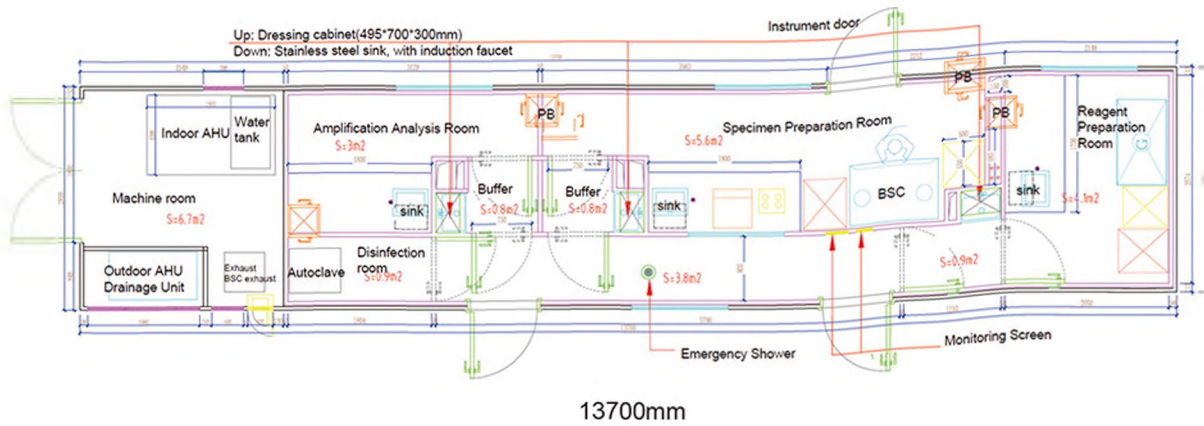
## Mobile PCR Laboratory



Mobile PCR laboratory meets the requirements of the enhanced medical BSL-2 laboratory, highly integrated with water, electricity, HVAC and other equipment, and equipped with the necessary instruments for the experiment. It adopts factory modular form a complete set.



12000mm



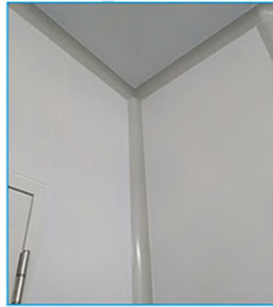
### Technical parameters of mobile PCR chamber laboratory

#### \* Capsule



1. Single box structure, factory modular form a complete set.
2. The wall is made of 2mm-thick reinforced wavy steel plate, and the floor is made of 5cm-thick special wood plate with high strength, which is suitable for transportation under various terrain conditions.
3. 6mm thick high-quality steel support frame, stable and durable; 5. Stainless steel outer door, double door design, with access control system;
4. The surface is treated with rust removal, anti-rust paint and container special paint for three times. It is all-weather and durable.

## \* Inside cabin



1. The ceiling and internal partition walls are made of 50mm laboratory dedicated antibacterial purification board with a thickness of up to 0.426mm, which has good antibacterial effect, fire prevention, moisture-proof
2. The Angle of Yin and Yang in the box is equipped with a special circular aluminum profile for the clean room, which ensures that the inside of the box is smooth and has no dead Angle, no ash accumulation, and is not easy to produce mold.
3. Special steel clean sealed door, with glass observation window, two doors in buffer room have interlock device, and equipped with emergency opening device, can be manually opened in emergency situations such as power failure;
4. The ground is made of 2mm PVC floor leather, which is fireproof, ibacterial, wear-resistant and non-slip.

## \* Area arrangement



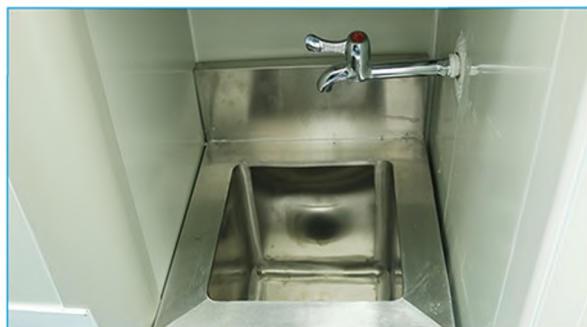
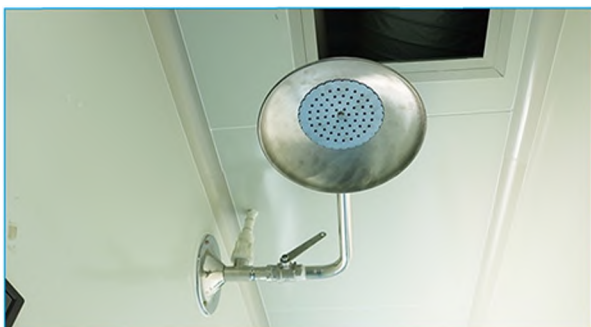
1. The PCR laboratory was designed in strict accordance with the three functional divisions: reagent preparation area, specimen preparation area and product amplification and analysis area, with independent buffer room. In addition, configure the washroom and equipment room.
2. The built-in PCR corridor facilitates the observation of the operation of each tition
3. The pressure gradient decreases step by step according to the direction of reagent preparation area, specimen preparation area and product amplification analysis area, and the airflow trend is one-way flow.
4. Each area is equipped with transfer window for goods transfer. The transfer window has the function of interlock and ultraviolet lamp disinfection.
5. Each area is equipped with LED clean lamps, which are energy saving and easy to maintain, and can effectively prevent the breeding of bacteria. The room illumination meets the standard requirements.
6. It is equipped with special ultraviolet lamp and time-delay function to protect the safety of experimental personnel.
7. A pressure differential meter is installed at the door of the buffer room to display the dynamic pressure in the room in real time.

\* Ventilation



1. Strictly follow the PCR laboratory air supply and exhaust design to ensure the air volume and ventilation frequency in the experimental area;
2. The combined clean air conditioning unit adopts primary and medium efficiency two-stage filter air supply for the fresh air unit and high-efficiency filter for the terminal air supply port to carry out three-stage filter air supply to ensure the cleanliness of the room meets the requirements.
3. The combined air conditioning unit carries out initial and medium efficiency, surface cooling and reheating system, filtration and temperature regulation for fresh air, which can meet the whole weather conditions of -20 ° C to 40 ° C and ensure the indoor temperature is constant.
4. The internal temperature of the laboratory is 18°C ~ 26°C, and the relative humidity does not exceed 70%.
5. Independent exhaust system, laboratory negative pressure high efficiency exhaust fan equipped with high efficiency exhaust filter, can effectively filter indoor biological aerosol, to avoid environmental pollution.

\* Water supply and drainage system



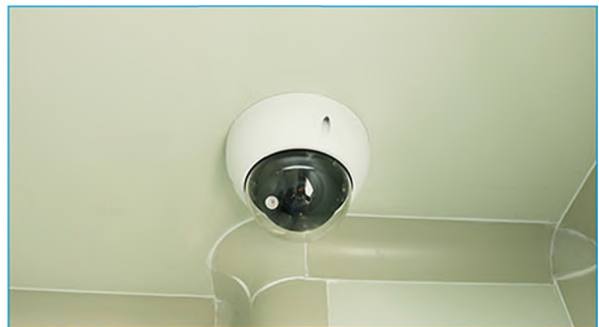
1. The clean water tank and waste water treatment equipment are integrated between the equipment to maintain the normal operation of the laboratory under the condition of water cut off.
2. Equipped with 260L capacity of clean water tank;
3. The drainage of the laboratory is collected centrally and discharged after inactivated treatment.  
The discharge standard meets relevant national standards.
4. The laboratory wastewater treatment equipment adopts neutralization and precipitation, compound disinfection, UV ultraviolet sterilization, ozone oxidation, multi-medium filtration and other technologies to treat all kinds of pollutants in wastewater;

## \* Laboratory table



1. The mesa is 12.7mm thick and the edges of the high-quality solid core physicochemical board are thickened to 25.4mm, which is resistant to corrosion, abrasion and strong acid and alkali.
2. The frame is made of 1.2mm high-quality cold-rolled steel plate, the surface is sprayed with epoxy resin electrostatic, the surface is smooth and smooth, without falling off bubble pits, indentation and scratch pitting points, cracks and cutting edges and other defects;The bottom is supported by adjustable feet, used for horizontal trimming joints of mesa
- 3.The cabinet is made of 1.2mm thick steel plate. The surface is defatted, washed, pickled, neutralized, phosphated and washed by high pressure washing and drying. The surface is cured by epoxy resin spraying powder at high temperature.
4. The accessories are of the exclusive brand of the high quality laboratory, equipped with the special faucet for the laboratory, PP sink, eye washer, etc.

## \* Controlling system



1. Visual intelligent control system, with room temperature and humidity, pressure gradient, lighting, uv lamp control;
2. With dynamic pressure control ability, it can automatically balance the change of pressure difference caused by air conditioning filter screen and high efficiency filter blockage, and display the running state of air supply and exhaust unit;
3. It has the function of exhaust air efficient clogging detection, realizing the alarm function when clogging occurs and reminding to replace.
4. With pressure gradient monitoring function, automatic alarm to remind users when the data is out of range; The room will monitor the temperature and humidity data in real time, and automatically alarm the user when the data is out of range;
5. With the function of pre-sterilization and intelligent sterilization, the abnormal situation always automatically alarm to remind users.



Mobile PCR Laboratory Equipments list for 12000mm, 13700mm

Area	Name	Model	Specification	Quantity
Reagent preparation room	Laminar flow cabinet	BBS-DDC	1040*615*1770mm	1
	Water purifier	SCSJ-20VF	410*270*500mm	1
	Refrigerator	BPR- 5V160	500*550*1300mm	1
	Freezer	BDF-40V90	600*611*898mm	1
	Mini centrifuge	Mini-7	They are placed in the Laminar flow cabinet for use	1
	Vortex mixer	BJPX-VW		1
	Pipette	0.5-1000ul		1
Balance	BA2204B	1		
Specimen preparation room	Biosafety cabinet	BSC-110IIB2-X	1100*750*2250mmmm	1
	Refrigerator	BPR- 5V160	500*550*1300mm	1
	Freezer	BDF-40V90	600*611*898mm	1
	High speed centrifuge	BKC-TH16	Equipped with 24*1.5/2ml angle rotor	1
	Nucleic Acid Extraction System	BNP32	430*380*450mm	1
	Water bath	SY-1L2H	320*180*210mm	1
	Vortex mixer	BJPX-VW	They are placed in the Biosafety cabinet for use	1
	Mini centrifuge	Mini-7		1
Pipette	0.5-1000ul	1		
Amplification& Analysis room	Fluorescence Quantitative PCR Detection System	LEIA-X4	375*490*365mm	1
Washing room	Autoclave	BKQ-B50II	640*550*970mm	1

**Mobile PCR Laboratory Equipments list for 17500mm**

Area	Name	Model	Specification	Quantity
Reagent preparation room	Laminar flow cabinet	BBS-SDC	1440*615*1770mm	1
	Water purifier	SCSJ-20VF	410*270*500mm	1
	Refrigerator	BPR- 5V250	580*575*1980mm	1
	Freezer	BDF-25V270	690*744*1631mm	1
	Mini centrifuge	Mini-7	They are placed in the Laminar flow cabinet for use	1
	Vortex mixer	BJPX-VW		1
	Pipette	0.5-1000µl		1
	Balance	BA2204B		1
Specimen preparation room	Biosafety cabinet	BSC-1500IIB2-X	1500*760*2250mmmm	1
	Refrigerator	BPR- 5V250	580*575*1980mm	1
	Freezer	BDF-25V270	690*744*1631mm	1
	High speed centrifuge	BKC-TH16	Equipped with 24*1.5/2ml angle rotor	1
	Nucleic Acid Extraction System	BK-HS96	980*575*770mm	1
	Water bath	SY-1L2H	320*180*210mm	1
	Vortex mixer	BJPX-VW	They are placed in the Biosafety cabinet for use	1
	Mini centrifuge	Mini-7		1
	Pipette	0.5-1000ul		1
Amplification& Analysis room	Fluorescence Quantitative PCR Detection System	LEIA-X4	375*490*365mm	2
Washing room	Autoclave	BKQ-B75II	640*550*1080mm	1

**По вопросам продаж и поддержки обращайтесь:**

Архангельск (8182)63-90-72  
Астана +7(7172)727-132  
Астрахань (8512)99-46-04  
Барнаул (3852)73-04-60  
Белгород (4722)40-23-64  
Брянск (4832)59-03-52  
Владивосток (423)249-28-31  
Волгоград (844)278-03-48  
Вологда (8172)26-41-59  
Воронеж (473)204-51-73  
Екатеринбург (343)384-55-89  
Иваново (4932)77-34-06  
Ижевск (3412)26-03-58  
Иркутск (395) 279-98-46  
Киргизия (996)312-96-26-47

Казань (843)206-01-48  
Калининград (4012)72-03-81  
Калуга (4842)92-23-67  
Кемерово (3842)65-04-62  
Киров (8332)68-02-04  
Краснодар (861)203-40-90  
Красноярск (391)204-63-61  
Курск (4712)77-13-04  
Липецк (4742)52-20-81  
Магнитогорск (3519)55-03-13  
Москва (495)268-04-70  
Мурманск (8152)59-64-93  
Набережные Челны (8552)20-53-41  
Нижегород (831)429-08-12  
Казахстан (772)734-952-31

Новокузнецк (3843)20-46-81  
Новосибирск (383)227-86-73  
Омск (3812)21-46-40  
Орел (4862)44-53-42  
Оренбург (3532)37-68-04  
Пенза (8412)22-31-16  
Пермь (342)205-81-47  
Ростов-на-Дону (863)308-18-15  
Рязань (4912)46-61-64  
Самара (846)206-03-16  
Санкт-Петербург (812)309-46-40  
Саратов (845)249-38-78  
Севастополь (8692)22-31-93  
Симферополь (3652)67-13-56  
Таджикистан (992)427-82-92-69

Смоленск (4812)29-41-54  
Сочи (862)225-72-31  
Ставрополь (8652)20-65-13  
Сургут (3462)77-98-35  
Тверь (4822)63-31-35  
Томск (3822)98-41-53  
Тула (4872)74-02-29  
Тюмень (3452)66-21-18  
Ульяновск (8422)24-23-59  
Уфа (347)229-48-12  
Хабаровск (4212)92-98-04  
Челябинск (351)202-03-61  
Череповец (8202)49-02-64  
Ярославль (4852)69-52-93

**Эл. почта [bba@nt-rt.ru](mailto:bba@nt-rt.ru) || Сайт: <https://biobase.nt-rt.ru/>**